



PREMIER

UNIFORMS THAT WORK FOR YOU

HOSPITALITYWEAR

COLLECTION 2017



DISCOVER
THE ARTISAN COLLECTION

WHAT'S COOKIN'?

His & Hers Chefs'wear

IT'S IN THE JEANS

All New Denim Styles

APRONS & TABARDS

We've Got You Covered



UNIFORMS THAT WORK FOR YOU

CONTENTS

HOSPITALITYWEAR COLLECTION

APRONS	6	-	27
TABARDS	28	-	31
SHIRTS & BLOUSES	34	-	53
WAISTCOATS	54	-	55
TIES & SCARVES	56	-	59
POLO SHIRTS	60	-	66
TROUSERS	67	-	69
CHEF'S JACKETS	72	-	81
CHEF'S T-SHIRT	82	-	83
CHEF'S POLO SHIRTS	84	-	85
CHEF'S TROUSERS	86	-	87
CHEF'S ACCESSORIES	88	-	89
CHEF'S APRONS	90	-	95
WHAT'S NEW	4	-	5
ETHICAL POLICY	96		
SIZE GUIDE	97		
WASH CARE	98		
INDEX	99		



= CULINARY COOL =

DISCOVER INSPIRATIONAL NEW UNIFORM CHOICES THAT REFLECT THE VERY LATEST IN RESTAURANT DESIGN CONCEPTS



46-47
CASUAL FRIDAY
SHIRTS



48-49
DENIM SHIRTS



82-83
COOLCHECKER
CHEF'S T-SHIRT



8-9
DENIM APRONS

ARTISAN COLLECTION A NEW APPROACH

The restaurant scene is changing and it's as much about what's on the walls, ceilings and floors as what's on your plate! There is an emerging trend for industrial chic; a kind of back-to-basics approach with earthy undertones and positive vibes. Exposed bulbs, bare brickwork and reclaimed timber sets the scene for a menu that is packed full of organic produce as our appetite demands locally sourced artisan fayre.



50-51
CROSS DYE SHIRTS



34-35
GINGHAM SHIRTS

Changing scenery and authentic appetites calls for a re-think on staff uniforms, so we have introduced some key new pieces for 2017. Gingham cotton shirts and textured roll-sleeve styles are complemented by a dose of denim, with jeans stitch aprons set to be a popular choice for establishments who are embracing the latest interior design concepts.

At Premier we research the market, we recognise the latest hospitality trends and focus our range accordingly. Colour remains at the heart of what we do, so you can mix and match with styles and have some fun creating inspirational uniforms that reflect your own individual style.





60 SUMPTUOUS APRONS

WITH 4 CLASSIC SHADES OF DENIM

'COLOURS COLLECTION' BIB APRON

PR150

- Bib apron offering good coverage
- Adjustable buckle on neckband
- Self-fabric ties
- Length of 86cm and width of 72cm

FABRIC

65% Polyester, 35% Cotton.
 VWeight: 195gsm
 Denim designs are 70% Cotton, 30% Polyester
 Denim designs are 265gsm
 Wash: 60°C domestic wash, 85°C industrial wash.

NB.

Great shades come to those who wait! Over time, repeated washing will give denim aprons a vintage appearance.



CORNFLOWER	ROYAL	MARINE BLUE	NAVY	INDIGO DENIM	BLUE DENIM	CYAN	LIGHT BLUE	TURQUOISE	MID BLUE
SAPPHIRE	LILAC	LAVENDER	PURPLE	RICH VIOLET	AUBERGINE	FUCHSIA	MAGENTA	PINK	HOT PINK
RASPBERRY CRUSH	BURGUNDY	RED	SALSA	STRAWBERRY RED	ORANGE	TERRACOTTA	CHESTNUT	BROWN	MOCHA
MUSHROOM	LATTE	KHAKI	NATURAL	CAMEL	MUSTARD	SUNFLOWER	YELLOW	LEMON	LIME
OASIS GREEN	OLIVE	AQUA	DUCK EGG BLUE	PEACOCK	TEAL	EMERALD	KELLY	PISTACHIO	APPLE
BOTTLE	SAGE	WHITE	BLACK DENIM	GREY DENIM	SILVER	STEEL	CHARCOAL	DARK GREY	BLACK



DENIM DUO

JEANS STITCH DENIM WAIST APRON

PR125

- Four pocket compartments
- Contrast stitch detail
- Antique Silver and Brass rivets
- Length 39.5cm

FABRIC

70% Cotton, 30% Polyester
Weight 265gsm
Wash: 60°C domestic wash, 85°C industrial wash

COLOUR

2 as listed

JEANS STITCH DENIM BIB APRON

PR126

- Four pocket compartments
- Contrast stitch detail
- Adjustable buckle on neck band
- Width 72cm, length 86cm

FABRIC

70% Cotton, 30% Polyester
Weight 265gsm
Wash: 60°C domestic wash, 85°C industrial wash

COLOUR

2 as listed



DENIM

NEW
STYLE



PR154

COLOURFUL SERVICE

'COLOURS COLLECTION' BIB APRON WITH POCKET

PR154

- Sliding adjustable buckle on neck band
- 90cm self-fabric ties
- Width 72cm, length 86cm
- Tablet friendly centre pocket with combined pen slot

FABRIC

65% Polyester, 35% Cotton
Weight 195gsm
Wash: 60°C domestic wash,
85°C industrial wash

COLOUR

40 as listed

'COLOURS COLLECTION' HALF WAIST APRON

PR151

- Mid length waist apron
- 90cm self-fabric ties
- Width 70cm, length 50cm
- Available in 40 colours

FABRIC

65% Polyester, 35% Cotton
Weight 195gsm
Wash: 60°C domestic wash,
85°C industrial wash

COLOUR

40 as listed



40
COLOURS



PR151





PR155

'COLOURS COLLECTION' THREE POCKET WAIST APRON

PR155

- 90cm self-fabric ties
- Width 60cm, length 33cm
- Three open pockets
- Available in 28 colours

FABRIC

65% Polyester, 35% Cotton
Weight 195gsm
Wash: 60°C domestic wash,
85°C industrial wash

COLOUR

40 as listed

'COLOURS COLLECTION' LONG BAR APRON

PR158

- 90cm self-fabric ties
- Width 80cm, length 90cm
- Tablet friendly centre pocket with combined pen slot
- Popular continental style

FABRIC

65% Polyester, 35% Cotton
Weight 195gsm
Wash: 60°C domestic wash,
85°C industrial wash

COLOUR

40 as listed



28 COLOURS



PR158

16
COLOURS

IT'S CHILD'S PLAY

'COLOURS COLLECTION' CHILDREN'S BIB APRON

PR149

- Safety release mechanism on neck band
- 50cm self-fabric ties
- Two sizes available
- Infant width 43cm, length 53cm
- Junior width 48cm, length 63cm

FABRIC

65% Polyester, 35% Cotton
Weight 195gsm
Wash: 60°C domestic wash,
85°C industrial wash

COLOUR

16 as listed



'COLOURS COLLECTION' 2 IN 1 APRON

PR159

- One apron worn two ways
- Bib and waist apron styles
- Pocket features on both styles
- Self-fabric ties

FABRIC

65% Polyester, 35% Cotton
Weight 195gsm
Wash: 60°C domestic wash,
85°C industrial wash

COLOUR

10 as listed



Can be worn as a bib apron, doubles over and neck ties are secured away to form a waist apron.



10
COLOURS

POLYESTER BIB APRON

PR167

- Adjustable sliding buckle on neck band
- Width 72cm, length 86cm
- 90cm self-fabric ties
- Budget solution

FABRIC

100% Polyester
Weight 195gsm
Wash: 40°C domestic wash

COLOUR

4 as listed



BLACK DARK GREY WHITE RED



'COLOURS COLLECTION' CONTRAST BIB APRON

PR162

- Colour contrasting vertical panel
- Sliding adjustable buckle on neck band
- Width 72cm, length 86cm
- Two front slanted pockets

FABRIC

65% Polyester, 35% Cotton
Weight 195gsm
Wash: 60°C domestic wash,
85°C industrial wash

COLOUR

12 as listed



**CONTRAST COLOUR
COMBINATIONS**



PR162

ESSENTIAL SERVICE

PR165

ESSENTIAL BIB APRON

PR165

- Classic bib apron
- Width 67cm, length 78cm
- 75cm self-fabric ties
- Budget solution

FABRIC

80% Polyester, 20% Cotton
Weight 170gsm
Wash: 40°C domestic wash.

COLOUR



BLACK

BISTRO VIBES

BISTRO WAIST APRON WITH POCKET

PR156

- 90cm self-fabric ties
- Width 90cm, length 80cm
- Waistband features a hanging pocket with pen slot
- Popular continental style

FABRIC

65% Polyester, 35% Cotton
Weight 195gsm
Wash: 60°C domestic wash, 85°C industrial wash

COLOUR



BLACK



BISTRO

NEW STYLE

'COLOURS COLLECTION' BISTRO WAIST APRON

PR169

- Popular continental style
- Width 100cm, length 100cm
- 90cm self-fabric ties
- Available in 10 colours

FABRIC

65% Polyester, 35% Cotton
Weight 195gsm
Wash: 60°C domestic wash, 85°C industrial wash

COLOUR



PR169

PR156



FAIRTRADE COTTON APRONS

Premier offers a solution for businesses who promote a message of Fairtrade through their working practices. These aprons are labelled with the official Fairtrade logo which acts as a great endorsement for your brand.

FAIRTRADE BIB APRON

PR112

- Sliding adjustable buckle on neckband
- 90cm self-fabric ties
- Centre pocket
- Width 60cm, length 84cm

FABRIC

100% Certified Fairtrade Cotton
Weight 200gsm
Wash: 40°C domestic wash.

COLOUR



BLACK

FAIRTRADE WAIST APRON

PR114

- Half waist apron
- 90cm self-fabric ties
- Width 70cm
- Length 50cm

FABRIC

100% Certified Fairtrade Cotton
Weight 200gsm
Wash: 40°C domestic wash.

COLOUR



BLACK



20
COLOURS



COTTON CREDENTIALS

100% COTTON BIB APRON

PR102

- Self-fabric ties
- Self-fabric neckband
- Width 60cm, length 87cm
- Available in 20 colours

FABRIC

100% Cotton
Weight 240gsm
Wash: 60°C domestic wash,
85°C industrial wash



COLOUR

20 as listed



BIB APRON WITH POCKET

PR104

- Black anti-tangle ties
- Black neckband
- Width 60cm, length 87cm
- Double front pocket

FABRIC

65% Polyester, 35% Cotton.
Klopman Superbandmaster
Weight 210gsm
Wash: 60°C domestic wash,
85°C industrial wash

COLOUR



BLACK NAVY

BIB APRON

PR101

- Black anti-tangle ties
- Black neck-band
- Width 72cm, length 87cm
- Crease resistant finish

FABRIC

65% Polyester, 35% Cotton.
Klopman Superbandmaster
Weight 210gsm
Wash: 60°C domestic wash,
85°C industrial wash

COLOUR



BLACK NAVY BOTTLE BURGUNDY RED

ZIP POCKET WAIST APRON

PR105

- Two zipped closed pockets
- Centre open pocket
- 90cm self-fabric ties
- Width 60cm, length 33cm

FABRIC

65% Polyester, 35% Cotton.
Klopman Indestructible
Weight 245gsm
Wash: 60°C domestic wash,
85°C industrial wash

COLOUR



BLACK



PR104

PR101



PR124



8 KLOPMAN STYLES

Klopman fabric is renowned for exceptional colour consistency and colour retention. You can be assured that these styles work as hard as you day after day.

DELUXE BIB APRON

PR124

- Sliding adjustable buckle on neck band
- Double front pocket
- Width 60cm
- Length 84cm

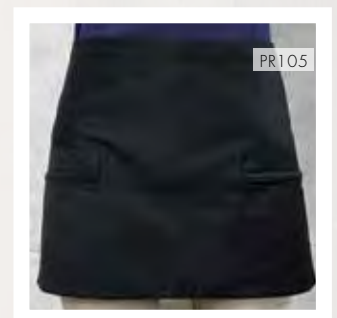
FABRIC

65% Polyester, 35% Cotton.
Klopman Superbandmaster
Weight 210gsm
Wash: 60°C domestic wash,
85°C industrial wash

COLOUR



BLACK NAVY WHITE BOTTLE



PR105



LONG BAR APRON WITH POCKET

PR106

- Tablet friendly front pocket
- Combined pen pocket
- Width 90cm
- Length 80cm

FABRIC

65% Polyester, 35% Cotton.
Klopman Indestructible
Weight 245gsm
Wash: 60°C domestic wash,
85°C industrial wash

COLOUR



BLACK

LONG BAR APRON

PR108

- Long waist apron
- 90cm self-fabric ties
- Width 90cm
- Length 80cm

FABRIC

65% Polyester, 35% Cotton.
Klopman Indestructible
Weight 245gsm
Wash: 60°C domestic wash,
85°C industrial wash

COLOUR



BLACK



CLASSIC SERVICE OPTIONS

SHORT BAR APRON

PR107

- Half waist apron
- 90cm self-fabric ties
- Width 90cm
- Length 40cm

FABRIC

65% Polyester, 35% Cotton.
Klopman Indestructible
Weight 245gsm
Wash: 60°C domestic wash,
85°C industrial wash

COLOUR



BLACK

3 OPEN POCKET BAR APRON

PR109

- Three open pockets
- 90cm self-fabric ties
- Width 60cm
- Length 33cm

FABRIC

65% Polyester, 35% Cotton.
Klopman Indestructible
Weight 245gsm
Wash: 60°C domestic wash,
85°C industrial wash

COLOUR



BLACK



LADIES' LONG LENGTH POCKET TABARD

PR172

- Pull-on coverall with a length of 78cm
- Side tabs with adjustable press stud fastening
- Self-coloured bias trim
- Centre pocket

FABRIC

65% Polyester, 35% Cotton
Weight: 195gsm
Wash: 60°C domestic wash, 85°C industrial wash

SIZES

10/S, 12/M, 14/L, 16/XL

COLOUR

3 colours as listed



LADIES' POCKET TABARD

PR171

- Pull-on coverall with a length of 68cm
- Side tabs with adjustable press stud fastening
- Self-coloured bias trim
- Centre pocket

FABRIC

65% Polyester, 35% Cotton
Weight: 195gsm
Wash: 60°C domestic wash, 85°C industrial wash

SIZES

10/S, 12/M, 14/L, 16/XL, 18/2XL, 20/3XL

COLOUR

18 colours as listed right



18 COLOURS



TABARDS

WE'VE GOT YOU COVERED

LADIES' CONTRAST TABARD

PR176

- Over-the-head style
- Side tabs with two stud button fastenings
- Two front slanted pockets
- Length 72cm

FABRIC

65% Polyester, 35% Cotton
Weight: 195gsm
Wash: 60°C domestic wash,
85°C industrial wash

SIZES

10/S, 12/M, 14/L, 16/XL

COLOUR

2 as listed

PR176



TURQUOISE & BLACK

HOT PINK & BLACK

TULIP WRAP AROUND TUNIC

PR177

- Over-the-head style
- Attractive shape to flatter the female figure
- V-neck styling
- Centre patch pocket

FABRIC

Fabric: 100% polyester plain weave
Weight: 185gsm
Wash: 40°C domestic wash.

SIZES

S/M, 10/12
L/XL, 14/16

COLOUR

4 as listed below

FASTENING TIP

Bring the ties from back to front and tie round your waist on the underside, then take front ties and fasten at the back.

TUNIC

**NEW
STYLE**

PR177



BLACK

DARK GREY

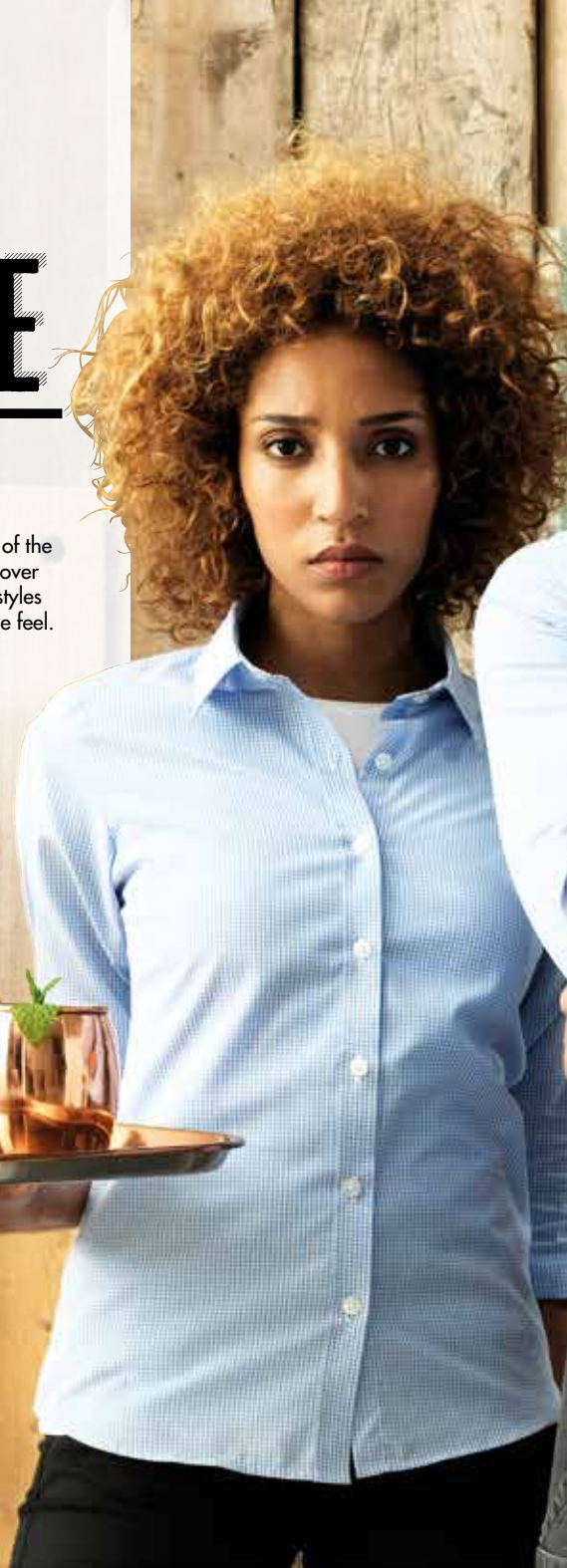
PURPLE

HOT PINK

SERVICE

RE-INVENTED

Your menu is ever changing to reflect the produce of the season and so too should your staff uniform. Discover preppy Gingham check shirts and vintage denim styles that will give your establishment a fresh wholesome feel.



GINGHAM

NEW
STYLES

CHECK INTO STYLE

MEN'S LONG SLEEVE GINGHAM POPLIN SHIRT

PR220

- Soft collar styling
- Microcheck Gingham pattern
- Double buttons on the cuff
- Semi fitted shirt

FABRIC

100% Cotton
Weight: 115gsm

SIZES (Call size/ Collar cm)

XS/36, S/39, M/40, L/42 XL/44, 2XL/46, 3XL/48

COLOUR

4 as listed opposite

LADIES' LONG SLEEVE GINGHAM POPLIN SHIRT

PR320

- Soft collar styling
- Microcheck Gingham pattern
- Double buttons on the cuff
- Bust and back darts for a fitted shape

LADIES' SHORT SLEEVE GINGHAM POPLIN SHIRT

PR321

- Soft collar styling
- Microcheck Gingham pattern
- Bust and back darts for a fitted shape

FABRIC

100% Cotton
Weight: 115gsm

SIZES

8/XS, 10/S, 12/M, 14/L, 16/XL, 18/2XL, 20/3XL

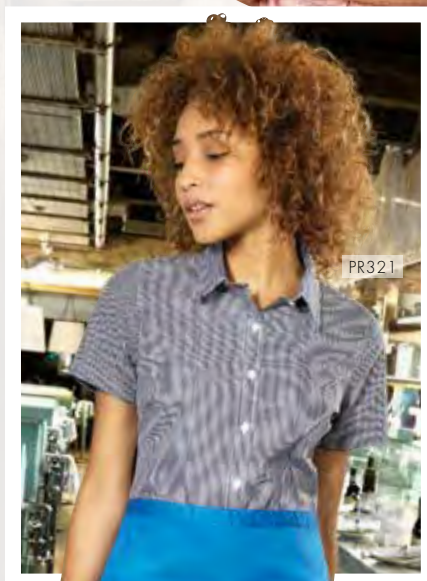
COLOUR

4 as listed opposite



PR220

PR320



PR321



RED/WHITE

BLACK/WHITE

NAVY/WHITE

LIGHT BLUE/WHITE

SEMI
FITTED



PR302

PR202



PREMIER[®]
UNIFORMS THAT WORK FOR YOU

30 SHADES

MEN'S SHORT SLEEVE POPLIN SHIRT

PR202

- Formal collar styling
- Left chest open /Mitre pocket
- Self-coloured buttons
- Easycare

FABRIC

65% Polyester, 35% Cotton
Weight: 105gsm

SIZES (collar) "/cm

14.5/37, 15/38, 15.5/40, 16/41, 16.5/42, 17/43, 17.5/45, 18/46, 18.5/47, 19/48, 20/51, 21/53, 22/56, (20", 21", 22" in Black & White only)

COLOUR

30 as listed

LADIES' SHORT SLEEVE POPLIN BLOUSE

PR302

- Soft collar styling
- Bust and back darts for a semi fitted appearance
- Rounded bottom hem
- Self-coloured buttons

FABRIC

65% Polyester, 35% Cotton
Weight: 105gsm /115gsm White

SIZES

6/2XS, 8/XS, 10/S, 12/M, 14/L, 16/XL, 18/2XL, 20/3XL, 22/4XL, 24/5XL, 26/6XL

COLOUR

30 as listed

**CLASSIC
FIT**



POPLIN

MEN'S LONG SLEEVE POPLIN SHIRT

PR200

- Formal collar styling
- Left chest open Mitred pocket
- Double button fastening on the cuff
- Easycare

FABRIC

65% Polyester, 35% Cotton
Weight: 105gsm

SIZES (collar) "/cm

**14.5/37, 15/38, 15.5/40, 16/41,
16.5/42, 17/43, 17.5/45, 18/46,
18.5/47, 19/48, 20/51, 21/53,
22/56,** (20", 21", 22" in Black & White only)

COLOUR

30 as listed

LADIES' LONG SLEEVE POPLIN BLOUSE

PR300

- Soft collar styling
- Bust and back darts for a semi fitted appearance
- Rounded bottom hem
- Double buttons on the cuff

FABRIC

65% Polyester, 35% Cotton
Weight: 105gsm/ White 115gsm

SIZES

**6/2XS, 8/XS, 10/S, 12/M, 14/L, 16/XL,
18/2XL, 20/3XL, 22/4XL, 24/5XL, 26/6XL**

COLOUR

30 as listed

**CLASSIC
FIT**

**30
COLOURS**



PR300

PR200

LADIES' THREE QUARTER SLEEVE POPLIN BLOUSE

PR305

- Soft collar styling
- Three quarter sleeve with vented cuff
- Bust and back darts for a semi fitted appearance
- Rounded bottom hem

FABRIC

65% Polyester, 35% Cotton
Weight: 105gsm/115gsm White

SIZES

6/2XS, 8/XS, 10/S, 12/M, 14/L, 16/XL, 18/2XL, 20/3XL, 22/4XL, 24/5XL, 26/6XL
(Size 6 in Black & White only)

COLOUR

7 as listed



**CLASSIC
FIT**

PR305

FITTED FOR YOU

MEN'S LONG SLEEVE FITTED POPLIN SHIRT

PR204

- Formal collar styling
- Optional chest pocket attachment
- Double button fastening on the cuff
- Fitted style

FABRIC

65% Polyester, 35% Cotton
Weight: 105gsm

SIZES (collar) "/cm

14.5/37, 15/38, 15.5/40, 16/41,
16.5/42, 17/43, 17.5/45

COLOUR

8 as listed

**FITTED
STYLE**



PR204



PR209

PR309

POPLIN HEAVY-WEIGHTS



BLACK

LIGHT BLUE

WHITE



BLACK

LIGHT BLUE

WHITE

SUPREME POPLIN

MEN'S SHORT SLEEVE SUPREME POPLIN SHIRT

PR209

- Offering a heavier fabric weight
- Formal collar styling
- Two button fastening on the collar stand
- Semi-fitted styling

FABRIC

65% Polyester, 35% Cotton
Weight: 125gsm

SIZES (collar) "/cm

14.5/37, 15/38, 15.5/40, 16/41, 16.5/42, 17/43, 17.5/45, 18/46, 18.5/47, 19/48

COLOUR

3 as listed

LADIES' SHORT SLEEVE SUPREME POPLIN BLOUSE

PR309

- Offering a heavier fabric weight
- Soft collar styling
- Two button fastening on the collar stand
- Semi-fitted styling with back and bust darts

FABRIC

65% Polyester, 35% Cotton
Weight: 125gsm

SIZES

8/XS, 10/S, 12/M, 14/L, 16/XL, 18/2XL, 20/3XL, 22/4XL, 24/5XL, 26/6XL

COLOUR

3 as listed

**SEMI
FITTED**

SUPREME POPLIN

MEN'S LONG SLEEVE SUPREME POPLIN SHIRT

PR207

- Offering a heavier fabric weight
- Formal collar styling
- Two button fastening on the collar stand
- Semi-fitted styling

FABRIC

65% Polyester, 35% Cotton
Weight: 125gsm

SIZES (collar) "/cm

14.5/37, 15/38, 15.5/40, 16/41, 16.5/42, 17/43, 17.5/45, 18/46, 18.5/47, 19/48

COLOUR

3 as listed



LADIES' LONG SLEEVE SUPREME POPLIN BLOUSE

PR307

- Offering a heavier fabric weight
- Soft collar styling
- Two button fastening on the collar stand
- Semi-fitted styling

FABRIC

65% Polyester, 35% Cotton
Weight: 125gsm

SIZES

8/XS, 10/S, 12/M, 14/L, 16/XL, 18/2XL, 20/3XL, 22/4XL, 24/5XL, 26/6XL

COLOUR

3 as listed



**SEMI
FITTED**



MEN'S LONG SLEEVE FITTED 'FRIDAY SHIRT'

PR214

- Soft collar styling
- Contrast fabric tape on the inside collar stand
- Buttoned cuff and sleeve guard for roll back option on the lower arm
- Fitted shirt

FABRIC

65% Polyester, 35% Cotton
Weight: 105gsm

SIZES (Call size/ Collar cm)

XS/36, **S**/39, **M**/40, **L**/42 **XL**/44, **2XL**/46

COLOUR

2 as listed

LADIES' LONG SLEEVE FITTED 'FRIDAY SHIRT'

PR314

- Soft collar styling
- Contrast fabric tape on the inside collar stand
- Buttoned cuff and sleeve guard for roll back option on the lower arm
- Fitted shirt with bust and back darts

FABRIC

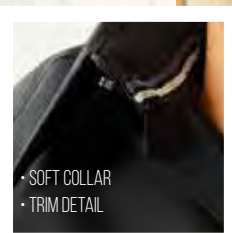
65% Polyester, 35% Cotton
Weight: 105gsm

SIZES (Call size)

XS/8, **S**/10, **M**/12, **L**/14 **XL**/16, **2XL**/18

COLOUR

2 as listed



• SOFT COLLAR
• TRIM DETAIL

FITTED
STYLE

KEEP IT CASUAL
WITH THE ALL NEW FRIDAY SHIRT

MEN'S JEANS STITCH

DENIM SHIRT

PR222

- 100% Ringspun Cotton Denim Shirt
- Contrast stitch details
- Left chest button down pocket
- Buttoned cuff and sleeve guard for roll back option on the lower arm

FABRIC

100% Ringspun Cotton Denim
Weight: 155gsm
Wash: 40°C domestic wash

SIZES

XS, S, M, L, XL, 2XL, 3XL

COLOUR

2 as listed

LADIES' JEANS STITCH

DENIM SHIRT

PR322

- 100% Ringspun Cotton Denim Shirt
- Contrast stitch details
- Two button down breast pockets
- Buttoned cuff and sleeve guard for roll back option on the lower arm

FABRIC

100% Ringspun Cotton Denim
Weight: 155gsm
Wash: 40°C domestic wash

SIZES

**8/XS, 10/S, 12/M, 14/L, 16/XL,
18/2XL, 20/3XL**

COLOUR

2 as listed



**SEMI
FITTED**



**HOSPITALITY
IT'S IN THE JEANS**

DENIM

**NEW
STYLE**

CROSS-DYE

**NEW
STYLE**

PR217

PR317



CROSS-DYE POPLIN SHIRTS

MEN'S ROLL SLEEVE 'CROSS DYE' POPLIN SHIRT

PR217

- Soft collar styling
- Cross dye textured fabric appearance
- Long sleeve option with two button fastening on the cuff
- Roll-up sleeve option with button fastening on the upper arm

FABRIC

65% Polyester, 35% Cotton
Weight: 105gsm

SIZES (Call size/Collar cm)

XS/36, S/39, M/40, L/42 XL/44, 2XL/46, 3XL/48

COLOUR

2 as listed



GREY DENIM

INDIGO DENIM

LADIES' ROLL SLEEVE 'CROSS DYE' POPLIN SHIRT

PR317

- Soft collar styling
- Cross dye textured fabric appearance
- Long sleeve option with two button fastening on the cuff
- Roll-up sleeve option with button fastening on the upper arm

FABRIC

65% Polyester, 35% Cotton
Weight: 105gsm

SIZES

**8/XS, 10/S, 12/M, 14/L, 16/XL,
18/2XL, 20/3XL**

COLOUR

2 as listed



GREY DENIM

INDIGO DENIM

**SEMI
FITTED**



• ROLL UP SLEEVE
• BUTTON FASTENING

ROLL-BACK IN STYLE

PR206

PR306

MEN'S ROLL SLEEVE POPLIN SHIRT

PR206

- Single button cuff fastening
- Button and tab on upper arm to secure rolled sleeve in place
- Left chest vented pocket
- Soft collar styling

FABRIC

65% Polyester, 35% Cotton
Weight: 105gsm

SIZES

S, M, L, XL, 2XL

COLOUR

1 colours as listed

LADIES' ROLL SLEEVE POPLIN SHIRT

PR306

- Bust and back darts
- Button and tab on upper arm to secure rolled sleeve in place
- Left chest vented pocket
- Soft collar styling

FABRIC

65% Polyester, 35% Cotton
Weight: 105gsm

SIZES

XS, S, M, L, XL, 2XL

COLOUR

1 colour as listed

**CLASSIC
FIT**





MEN'S LINED POLYESTER WAISTCOAT

PR622

- Satin back
- Two functional watch pockets
- Five button fastening
- Back adjuster

FABRIC

100% Polyester
Weight: 185gsm

SIZES

2XS, XS, S, M, L, XL, 2XL

COLOUR

1 as listed

LADIES' LINED POLYESTER WAISTCOAT

PR623

- Satin back
- Two functional watch pockets
- Four button fastening
- Back adjuster

FABRIC

100% Polyester
Weight: 185gsm

SIZES

2XS, XS, S, M, L, XL, 2XL

COLOUR

1 as listed



WAISTCOATS

SERVICE READY

MEN'S HOSPITALITY WAISTCOAT

PR620

- Self-fabric back
- Two functional watch pockets
- Five button fastening
- Easycare

FABRIC

65% Polyester, 35% Cotton
Weight: 195gsm

SIZES

S, M, L, XL, 2XL

COLOUR

1 as listed

LADIES' HOSPITALITY WAISTCOAT

PR621

- Self-fabric back
- Two functional watch pockets
- Four button fastening
- Easycare

FABRIC

65% Polyester, 35% Cotton
Weight: 195gsm

SIZES

S, M, L, XL, 2XL

COLOUR

1 as listed



'COLOURS COLLECTION'

'COLOURS COLLECTION' LADIES' CHIFFON SCARF

PR740

- Lightweight chiffon
- Width 6.5" / 16.5cm
- Length 38.5" / 98cm
- Complements PR750 men's tie

FABRIC

100% Polyester
Wash: Hand wash only

Colours

40 as listed below



'COLOURS COLLECTION'

SATIN TIE

PR750

- Plain satin tie
- Blade width 3.34" / 8.5cm
- Length 57" / 144cm
- Clip-on version, PR755

FABRIC

100% Polyester
Wash: 30°C domestic wash

Colours

40 as listed below

CLIP-ON SATIN TIE

PR755

- Clip-on version of PR750
- Steel clip
- Blade width 3.34" / 8.5cm
- Length 20" / 50cm

FABRIC

100% Polyester
Wash: Hand wash only

Colours

40 as listed below



18 COLOURS

'COLOURS COLLECTION' CLIP-ON FASHION TIE

PR785

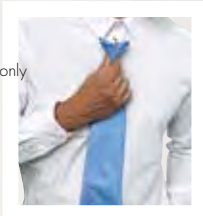
- Clip-on version
- Blade width 4" / 10cm
- Length 18" / 47cm
- PR765 Full tie version available

FABRIC

100% Polyester
Wash: Hand wash only

COLOUR

18 as listed



SLIM TIE

PR793

- Satin weave
- Blade width 2" / 5cm
- Length 58" / 147cm

FABRIC

100% Polyester

COLOUR

5 as listed



BOW TIE

PR705

- Satin weave bow tie
- Hook and bar fastening.

FABRIC

100% Polyester



KNITTED

SLIM & STYLISH TIE

SLIM KNITTED TIE

PR789

- Blade width 2" / 5cm
- Length 58" / 147cm
- Hand wash only

FABRIC

100% Polyester

COLOUR

6 as listed



SLIM KNITTED

NEW STYLE



COOL[®]
CHECKER

POLO SHIRTS

MEN'S COOLCHECKER PIQUE POLO

PR615

- Side panels for fitted shape
- Ribbed knit collar
- Three button placket
- Moisture management properties

FABRIC

100% Polyester pique knit
Weight: 155gsm

SIZES

S/35", **M**/37", **L**/39", **XL**/41", **2XL**/44",
3XL/46", **4XL**/48", ***5XL**/51"
(*5XL only available in highlighted colours)

COLOUR

18 as listed opposite

LADIES' COOLCHECKER PIQUE POLO

PR616

- Side panels for fitted shape
- Ribbed knit collar
- Three button placket
- Moisture management properties

FABRIC

100% Polyester pique knit
Weight: 155gsm

SIZES

8/XS, **10**/S, **12**/M, **14**/L, **16**/XL,
18/2XL

COLOUR

18 as listed opposite



18
COLOURS

STRAWBERRY RED

BURGUNDY

* RED

AUBERGINE

HOT PINK

PURPLE

*NAVY

*ROYAL

SAPPHIRE

TURQUOISE

LIGHT BLUE

LIME

*WHITE

BOTTLE

*SILVER

*DARK GREY

BROWN

*BLACK

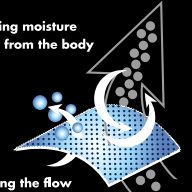
CONTRAST

NEW
STYLE



**COOL
CHECKER®**

Drawing moisture
away from the body



Allowing the flow
of air through the fabric,
fast dry and crease resistant.



CONTRAST POLO

MEN'S CONTRAST TIPPED COOLCHECKER POLO

PR618

- Side panels for fitted shape
- Ribbed knit collar and cuffs
- Three button placket
- Contrast trim on collar, placket and sleeves

FABRIC

100% Polyester pique knit
Weight: 155gsm

SIZES

**S/35", M/37", L/39", XL/41", 2XL/44",
3XL/44"**

COLOUR

8 as listed

LADIES' CONTRAST TIPPED COOLCHECKER POLO

PR619

- Side panels for fitted shape
- Ribbed knit collar and cuffs
- Three button placket
- Contrast trim on collar, placket and sleeves

FABRIC

100% Polyester pique knit
Weight: 155gsm

SIZES

**8/XS, 10/S, 12/M, 14/L, 16/XL,
18/2XL**

COLOUR

8 as listed

COOL[®] CHECKER

MEN'S LONG SLEEVE COOLCHECKER PIQUE POLO

PR617

- Three button placket
- Side panels for a fitted shape
- Moisture management wicking properties
- Ribbed knit collar and cuffs

FABRIC

100% Polyester Pique
Weight: 155gsm
Wash: 40°C domestic wash

SIZES

XS, S, M, L, XL, 2XL, 3XL, 4XL

COLOUR

2 as listed



SNAPPY STYLES

COOLCHECKER STUDDED POLO

PR612

- Two pop stud fastening on the placket
- Extra body length
- Moisture management wicking properties
- Self-fabric collar

FABRIC

100% Polyester Pique
Weight: 140gsm
Wash: 60°C domestic wash

SIZES

**XS, S, M, L, XL,
2XL, 3XL,**

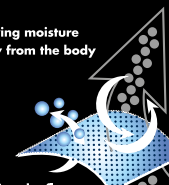
COLOUR

9 as listed



COOL[®] CHECKER

Drawing moisture
away from the body



Allowing the flow
of air through the fabric,
fast dry and crease resistant.

**9
COLOURS**





SNAP FRONT

MEN'S STUDDED POLO

PR610

- Three pop stud placket
- Extra body length
- Durable pique knit construction
- Ribbed knit collar

FABRIC

65% Polyester, 35% Cotton
Weight: 200gsm
Wash: 50°C domestic wash

SIZES

S, M, L, XL, 2XL, 3XL

COLOUR

4 as listed



HOSPITALITY TROUSERS

LADIES' FLAT FRONT TROUSERS

PR532

- Metal 'D' ring attached to the waist band
- YKK zip fly with button, hook 'n' bar fastening
- 'Bootcut' style
- Rear jetted pocket

FABRIC

100% Polyester
Weight: 215gsm

SIZES

8 - 24 / XS-5XL
Regular leg 31"/79cm and
Long leg 34"/86cm available

COLOUR

Black

MEN'S FLAT FRONT TROUSERS

PR523

- Metal 'D' ring attached to the front belt loop
- YKK zip fly with button, hook 'n' bar fastening
- Two swing hip pockets
- Rear jetted pocket

FABRIC

100% Polyester
Weight: 215gsm

SIZES

30 - 42" / 76 - 106cm waist
Regular leg 31"/79cm and
Long leg 34"/86cm

COLOUR

Black

TAILORED FIT

PR526



STRAIGHT FIT

PR536



STRAIGHT FIT

PR520



BOOT CUT

PR530



SLIM FIT

PR530



TAPERED FIT

PR538



YOU WEAR THE TROUSERS

MEN'S TAILORED TROUSERS

PR526

- Flat fronted trouser offering a more tailored fit
- YKK zip fly with button, hook 'n' bar fastening
- Two swing hip pockets
- Rear jetted pocket

FABRIC

100% Polyester
Weight: 185gsm

SIZES

30 - 44" / 76-110cm waist.
Regular leg 31"/79 cm and Long leg 34"/86 cm available

COLOUR



BLACK

LADIES' 'IRIS' STRAIGHT LEG TROUSER

PR536

- Trousers with a deep waistband
- YKK fastening zip
- Cross-over waistband with two button fastening
- No pockets

FABRIC

100% Polyester
Weight: 185gsm

SIZES

8 - 24 / XS-5XL
Regular leg 31"/79 cm and Long leg 34"/86 cm available

COLOUR



BLACK

MEN'S BUSINESS TROUSERS

PR520

- Single pleated front
- YKK zip fly with button, hook 'n' bar fastening
- Two swing hip pockets
- Rear jetted pocket

FABRIC

100% Polyester
Weight: 185gsm

SIZES

30 - 44" / 76-110cm waist.
Regular leg 31"/79 cm and Long leg 34"/86 cm available

COLOUR



BLACK



DARK NAVY

LADIES' BUSINESS TROUSERS

PR530

- Single pleated front
- YKK zip fly with button, hook 'n' bar fastening
- Boot cut style
- Belt loops

FABRIC

100% Polyester
Weight: 185gsm

SIZES

8 - 24 / XS-5XL
Regular leg 31"/79 cm and Long leg 34"/86 cm available

COLOUR



BLACK



DARK NAVY

MEN'S SLIM FIT POLYESTER TROUSERS

PR528

- Trousers offering a slimmer fit shape around the leg
- YKK zip fly with button, hook 'n' bar fastening
- Two swing hip pockets
- Rear jetted pocket

FABRIC

100% Polyester
Weight: 185gsm

SIZES

30 - 44" / 76-110cm waist.
Regular leg 31"/79 cm and Long leg 34"/86 cm available

COLOUR



BLACK

LADIES' TAPERED LEG TROUSER

PR538

- Tapered fit that follows the contours of the leg
- YKK fastening zip
- Cross-over waistband with two button fastening
- Two non-functional rear vented pockets for styling

FABRIC

100% Polyester
Weight: 185gsm

SIZES

8 - 24 / XS-5XL
Regular leg 31"/79 cm and Long leg 34"/86 cm available

COLOUR



BLACK

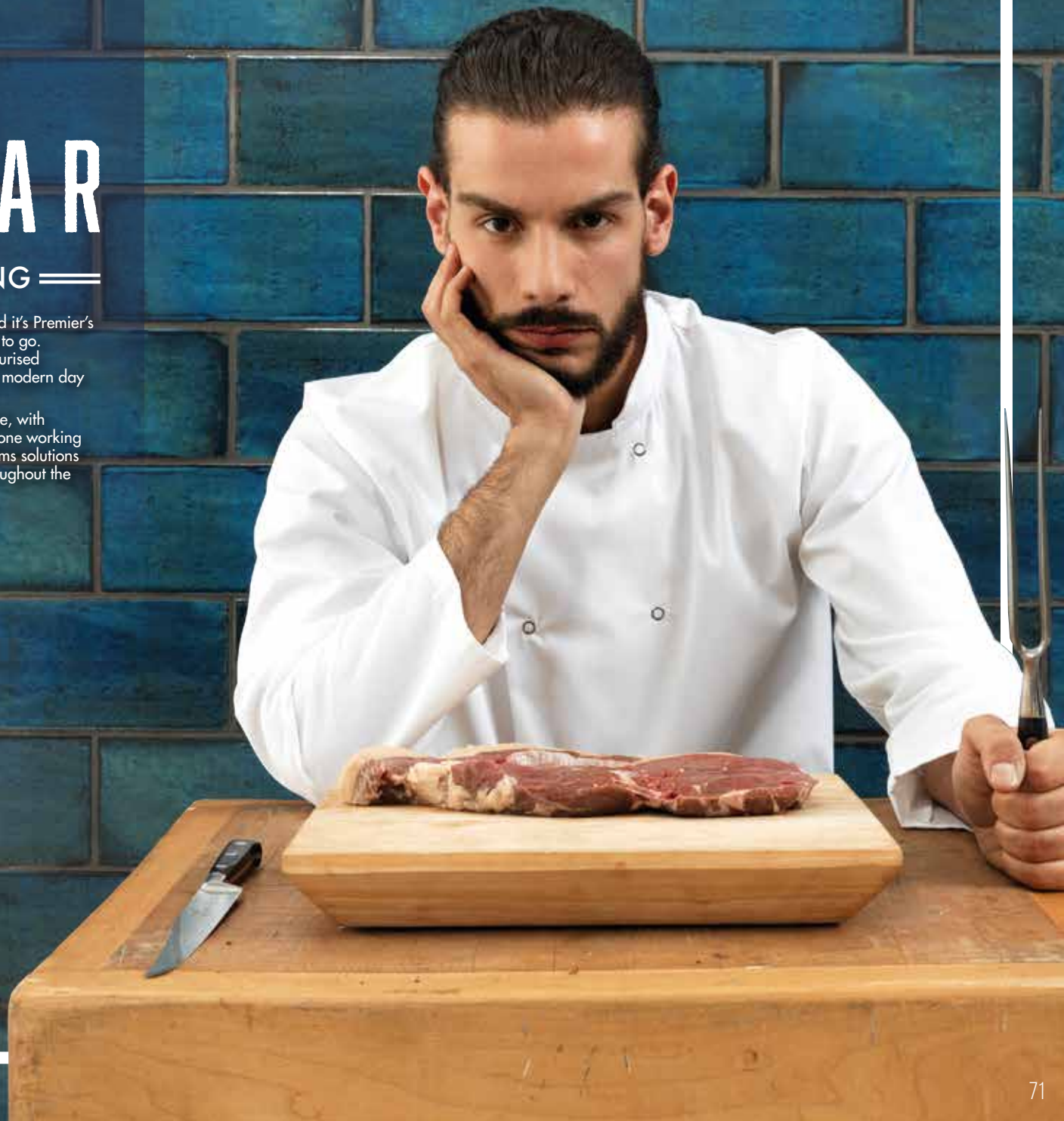


CHEFSWEAR

== PREPARATION IS EVERYTHING ==

Before every successful service comes a great deal of preparation and it's Premier's job to ensure that chef and the team are dressed and prepped ready to go. Chef must dress for practicality to deal with the demands of the pressurised kitchen environment, whilst also dressing for the audience with many modern day restaurants enjoying an open plan concept.

The Premier chef's wear collection combines both practicality and style, with traditional chef's whites giving way to more casual alternatives. Anyone working in food and hygiene sensitive environments needs appropriate uniforms solutions and Premier has this in abundance with size and choice running throughout the collection.



SHORT SLEEVE STUDED FRONT CHEF'S JACKET

PR664

- Mandarin collar
- Press stud fastening
- Wrap over style
- Unisex styling

FABRIC

65% Polyester, 35% Cotton
Weight: 195gsm
Wash: 60°C domestic wash,
85°C industrial wash

SIZES

XS, S, M, L, XL, 2XL

COLOUR

2 as listed

LONG SLEEVE STUDED FRONT CHEF'S JACKET

PR665

- Mandarin collar
- Press stud fastening
- Wrap over style
- Unisex styling

FABRIC

65% Polyester, 35% Cotton
Weight: 195gsm
Wash: 60°C domestic wash,
85°C industrial wash

SIZES

XS, S, M, L, XL, 2XL

COLOUR

2 as listed



BLACK

WHITE

PR665

PR664

THE MAIN INGREDIENTS



LADIES' SHORT SLEEVE CHEF'S JACKET

PR670

- Ten button hole wrap over fastening
- Pen pocket on left sleeve
- Mandarin collar
- Panelled back for a more fitted style

FABRIC

65% Polyester, 35% Cotton.
Weight: 195gsm

SIZES

8/XS, 10/S, 12/M, 14/L, 16/XL, 18/2XL

COLOUR

2 as listed



LADIES' LONG SLEEVE CHEF'S JACKET

PR671

- Ten button hole wrap over fastening
- Pen pocket on left sleeve
- Mandarin collar
- Panelled back for a more fitted style

FABRIC

65% Polyester, 35% Cotton.
Weight: 195gsm

SIZES

8/XS, 10/S, 12/M, 14/L, 16/XL, 18/2XL

COLOUR

2 as listed



LADIES' CHEFSWEAR

IN 2 CLASSIC STYLES



CULINARY CLASSICS

THE LONG & SHORT OF IT



PR657



PR656

SHORT SLEEVE CHEF'S JACKET

PR656

- Ten button hole wrap over fastening
- Pen pocket on left sleeve
- Mandarin collar
- Long life resin buttons

FABRIC

65% Polyester, 35% Cotton.
Weight: 195gsm

SIZES

XS, S, M, L, XL, 2XL, 3XL, 4XL

COLOUR

2 as listed

LONG SLEEVE CHEF'S JACKET

PR657

- Ten button hole wrap over fastening
- Pen pocket on left sleeve
- Mandarin collar
- Long life resin buttons

FABRIC

65% Polyester, 35% Cotton.
Weight: 195gsm

SIZES

XS, S, M, L, XL, 2XL, 3XL, 4XL

COLOUR

2 as listed



CATCH OF THE DAY

CHEF'S SHORT SLEEVE 'CULINARY' PULL ON TUNIC

PR668

- Over-the-head style
- Mandarin collar
- Wrap over style
- Single press stud fastening

FABRIC

65% Polyester, 35% Cotton
Weight: 195gsm
Wash: 60°C domestic wash,
85°C industrial wash

SIZES

XS, S, M, L, XL, 2XL

COLOUR

1 as listed opposite



CHEF'S LONG SLEEVE 'CULINARY' PULL ON TUNIC

PR669

- Over-the-head style
- Mandarin collar
- Wrap over style
- Single press stud fastening

FABRIC

65% Polyester, 35% Cotton
Weight: 195gsm
Wash: 60°C domestic wash,
85°C industrial wash

SIZES

XS, S, M, L, XL, 2XL

COLOUR

1 as listed opposite



PR668

PR669



PR601

PR659

WORK COAT

PR601

- Concealed press stud fastening
- Left chest open mitred pocket
- Two lower mitred patch pockets
- 100cm long

FABRIC

65% Polyester, 35% Cotton
Weight: 195gsm

SIZES

M, L, XL

COLOUR

2 as listed



WHITE

NAVY

LONG SLEEVE COOLMAX CHEF'S JACKET



PR659

- Coolmax back panel for moisture management
- Mandarin collar
- Concealed press stud fastening

FABRIC

65% Polyester, 35% Cotton
Weight: 195gsm
Wash: 50°C domestic wash

SIZES

XS, S, M, L, XL, 2XL

COLOUR

1 as listed



WHITE

PREMIER
UNIFORMS THAT WORK FOR YOU



PR661

LONG SLEEVE CUISINE CHEF'S JACKET

PR661

- Mandarin collar
- Comes with Black removable studs (other colours available, see page 89)
- Ten hole wrap over fastening
- Turn back split cuff

FABRIC

65% Polyester, 35% Cotton
Weight: 195gsm



SIZES

XS, S, M, L, XL, 2XL, 3XL, 4XL

COLOUR

2 as listed



BLACK

WHITE



COOLCHECKER

NEW
STYLE



COOL[®]
CHECKER

CHEF'S COOLCHECKER T-SHIRT

PR649

- Crew neck styling
- Mesh back panel for airflow
- Underarm side vent holes
- Pen pocket on left sleeve

FABRIC

100% Polyester
Weight: 135gsm
Wash: 40°C domestic wash

SIZES

XS, S, M, L, XL, 2XL, 3XL

COLOUR

2 as listed



PEN POCKET •
UNDER ARM SIDE VENT HOLES •



BLACK

WHITE



COOLCHECKER STUDED POLO

PR612

- Two pop stud fastening on the placket
- Extra body length
- Moisture management wicking properties
- Self-fabric collar

FABRIC

100% Polyester Pique
Weight: 140gsm
Wash: 60°C domestic wash

SIZES

**XS, S, M, L,
XL, 2XL, 3XL,**

COLOUR

9 as listed



PR610



MEN'S STUDED POLO

PR610

- Three pop stud placket
- Extra body length
- Durable pique knit construction
- Ribbed knit collar

FABRIC

65% Polyester, 35% Cotton
Weight: 200gsm
Wash: 50°C domestic wash

SIZES

S, M, L, XL, 2XL, 3XL

COLOUR

4 as listed



PR615



PR616

**18
COLOURS**

MEN'S COOLCHECKER PIQUE POLO

PR615

- Three button placket
- Side panels for a fitted shape
- Moisture management wicking properties
- Ribbed knit collar and cuffs

FABRIC

100% Polyester Pique
Weight: 155gsm
Wash: 40°C domestic wash

SIZES

S, M, L, XL, 2XL, 3XL, 4XL, *5XL

(*5XL only available in highlighted colours)

COLOUR

18 as listed

LADIES' COOLCHECKER PIQUE POLO

PR616

- Side panels for fitted shape
- Ribbed knit collar
- Three button placket
- Moisture management properties

FABRIC

100% Polyester pique knit
Weight: 155gsm
Wash: 40°C domestic wash

SIZES

**8/XS, 10/S, 12/M, 14/L, 16/XL,
18/2XL**

COLOUR

18 as listed



STRAWBERRY RED
BURGUNDY
* RED
AUBERGINE
HOT PINK
PURPLE
*NAVY
*ROYAL
SAPPHIRE
TURQUOISE
LIGHT BLUE
LIME
*WHITE
BOTTLE
*SILVER
*DARK GREY
BROWN
*BLACK



SLIM FIT

PR554

REGULAR FIT

PR553

YOU WEAR THE TROUSERS



CHEF'S SELECT SLIM LEG TROUSER

PR554

- Fitted style on lower leg
- Rear patch pocket
- Patch pocket on right leg
- Elasticated waist with draw cord and zip fly fastening

FABRIC

65% Polyester, 35% Cotton.
Weight: 195gsm
Wash: 60°C domestic wash,
85°C industrial wash

SIZES

XS, S, M, L, XL, 2XL

COLOUR

1 colour as listed

PULL ON CHEF'S TROUSER

PR552

- Elasticated waist
- Rear patch pocket
- Zip fly
- 77cm/30.5" inside leg

FABRIC

65% Polyester, 35% Cotton.
Weight: 195gsm
Wash: 60°C domestic wash,
85°C industrial wash

SIZES

XS, S, M, L, XL, 2XL

COLOUR

2 colours as listed

ESSENTIAL CHEF'S TROUSER

PR553

- Elasticated waist
- Draw cord
- Swing pockets
- 77cm/30.5" inside leg

FABRIC

65% Polyester, 35% Cotton.
195gsm (Black, Black/White Check)
203gsm (Black/ Grey Fine Stripe)
Wash: 60°C domestic wash,
85°C industrial wash

SIZES

XS, S, M, L, XL, 2XL, 3XL, *4XL
(*4XL only available in black)

COLOUR

3 colours as listed



CHEF'S ZANDANA

PR658

- Two ties at the back
- Elasticated back
- Neck flap
- Unisex design

FABRIC

65% Polyester, 35% Cotton.
Weight: 195gsm

SIZES

One Size

COLOUR

2 as listed



PR653

PR654



PR658

BLACK BOTTLE BLACK & WHITE CHECK NAVY RED WHITE *NAVY & WHITE STRIPE *BLACK & WHITE STRIPE

CHEF'S SKULL CAP

PR653

- Flat top
- Elasticated back
- One size fits all

FABRIC

Colours - 65% Polyester, 35% Cotton
*Striped - 100% Cotton
Weight: Colours - 195gsm
*Striped - 240gsm
Wash: 60°C domestic wash,
85°C industrial wash

SIZES

One size

COLOUR

8 as listed



BLACK/
WHITE STRIPE

BLACK/
WHITE CHECK

NAVY/
WHITE STRIPE

BLACK

NAVY

BOTTLE

WHITE

RED

CHEF'S SCARF

PR654

- Triangular scarf
- Can be worn as a bandana, neckerchief or headband
- Colours to complement aprons, stud and skull caps
- Crease resistant finish

FABRIC

Colours - 65% Polyester, 35% Cotton
*Striped - 100% Cotton
Weight: Colours - 195gsm
*Striped - 240gsm
Wash: 60°C domestic wash,
85°C industrial wash

SIZES

One Size

COLOUR

8 as listed

TURN UP CHEF'S HAT

PR648

- Turn up double edge band
- Five eyelets for ventilation
- Four sizes available

FABRIC

65% Polyester, 35% Cotton.
Weight: 195gsm
Wash: 60°C domestic wash,
85°C industrial wash

SIZES

S, M, L, XL

COLOUR



HEADWEAR

**NEW
STYLE**

PR648

CHEF'S JACKET STUDS

PR652

- Removable studs
- For use with PR661 Cuisine Jacket (page 81)
- Sold in bags of 12

FABRIC

Durable plastic
Wash: Wipe clean

COLOUR

4 as listed



BLACK

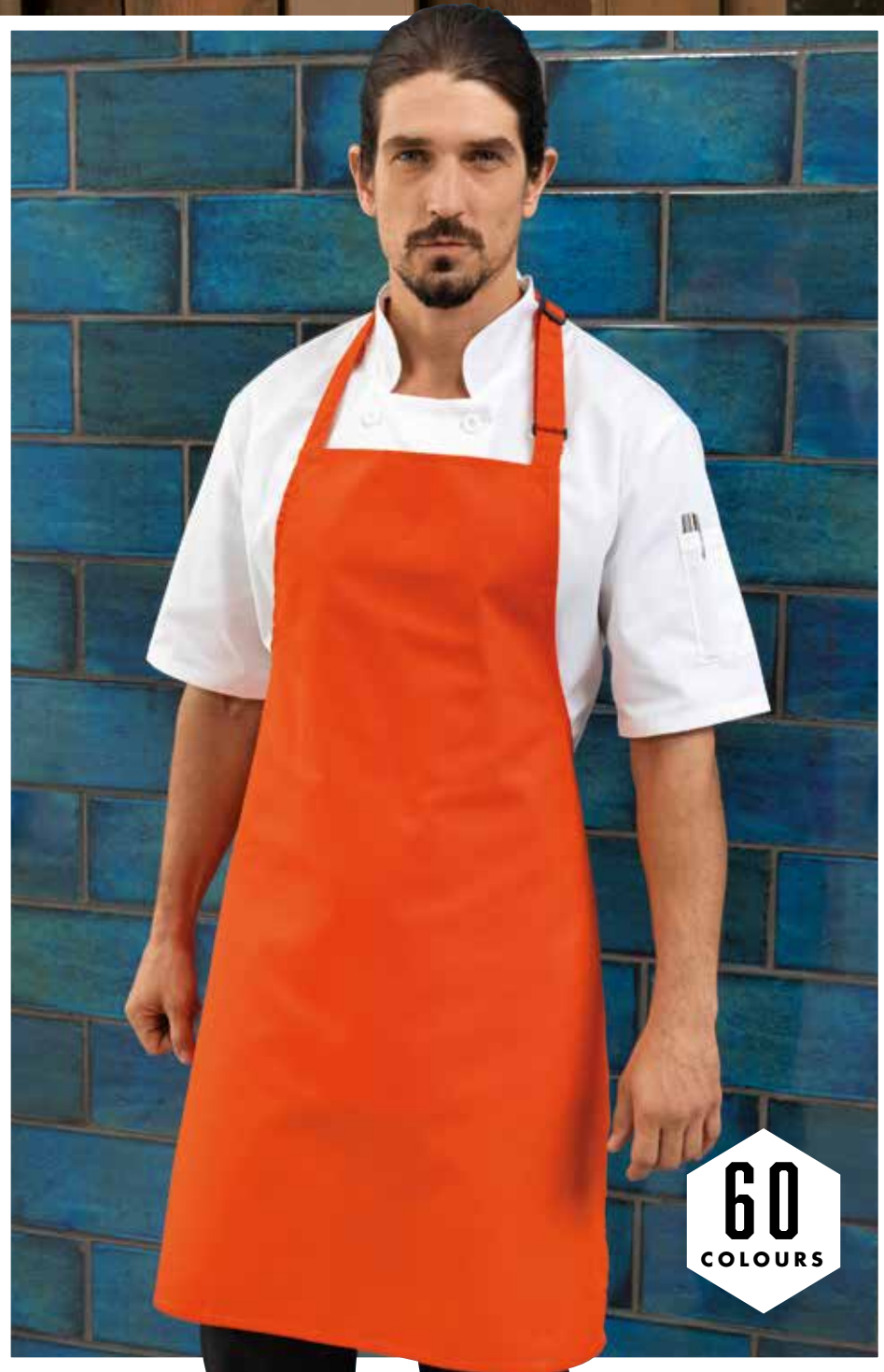
NAVY

WHITE

RED



PR652



'COLOURS COLLECTION'

'COLOURS COLLECTION' BIB APRON

PR150

- Bib apron offering good coverage
- Adjustable buckle on neckband
- Self-fabric ties
- Length of 86cm and width of 72cm

FABRIC

65% Polyester, 35% Cotton.

VWeight: 195gsm

Denim designs are 70% Cotton, 30% Polyester

Denim designs are 265gsm

Wash: 60°C domestic wash, 85°C industrial wash.

NB.

Great shades come to those who wait! Over time, repeated washing will give denim aprons a vintage appearance.



PURE COTTON

100% COTTON BIB APRON

PR102

- Self-fabric ties
- Self-fabric neckband
- Width 60cm, length 87cm
- Available in 20 colours

FABRIC

100% Cotton
Weight 240gsm
Wash: 60°C domestic wash,
85°C industrial wash

COLOUR

20 as listed



PR102

STRIPED BIB APRON

PR110

- Butcher's style apron
- 90cm self-fabric ties and neck band
- Width 72cm, length 101cm

FABRIC

Navy/White, Black/White: 100% Cotton
Weight 240gsm

Black/Grey, Black/Grey fine stripe:
65% Polyester, 35% Cotton
Weight 205gsm

Wash: 60°C domestic wash,
85°C industrial wash

COLOUR



CLASSIC HALF STRIPE APRON

PR168

- Popular vertical striped pattern
- Width 70cm, length 50cm
- 90cm self-fabric ties
- Printed stripes

FABRIC

100% Cotton
Weight: 240gsm
Wash: 60°C domestic wash,
85°C industrial wash

COLOUR

2 as listed



NAVY/WHITE

BLACK/WHITE



PR168

PR110



PR164

GASTRONOMY WAIST APRON

PR164

- Tapered style
- Popular striped pattern
- Width 75cm, length 86cm
- 90cm self-fabric ties

FABRIC

65% Polyester, 35% Cotton
Weight: 205gsm
Wash: 60°C domestic wash,
85°C industrial wash

COLOUR

2 as listed



JEANS STITCH DENIM WAIST APRON

PR125

- Four pocket compartments
- Contrast stitch detail
- Antique Silver and Brass rivets
- Length 39.5cm

FABRIC

70% Cotton, 30% Polyester
Weight: 265gsm
Wash: 60°C domestic wash,
85°C industrial wash

COLOUR

2 as listed



JEANS STITCH DENIM BIB APRON

PR126

- Four pocket compartments
- Contrast stitch detail
- Adjustable buckle on neck band
- Width 72cm, length 86cm

FABRIC

70% Cotton, 30% Polyester
Weight: 265gsm
Wash: 60°C domestic wash, 85°C
industrial wash

COLOUR

2 as listed



DENIM

**NEW
STYLE**

PR125

PR126

ETHICAL POLICY

CERTIFICATIONS OF COMPLIANCE

At Premier we take our Corporate Social Responsibility very seriously and we continue to invest to ensure that the long term vision for the company is sustainable in relation to the environment and the people that live and work alongside us.

We are able to provide you with copies of our certifications of compliance, so you can be assured that we are working to the highest ethical, social and environmental standards we can.



Registration, Evaluation, Authorisation and Restriction of Chemicals (REACH)

The REACH directive is a European Union regulation concerning the protection of human health and the environment from the use of chemicals during the production process. All Premier products are produced in factories that are REACH compliant.

Visit www.hse.gov.uk/reach to learn more about the REACH directive.



OEKO-TEX® Standard 100

OEKO-TEX® Standard 100 is an independent testing and certification system for textiles which highlights the use of any dangerous substances that could be harmful to human health.

At every stage of production, the majority of the Premier fabrics have passed the recognised criteria, proving that no such chemicals have been used during any stage of production. All products that are manufactured from OEKO-TEX® Standard 100 approved fabric have the logo visible on the product page on the premier website.

Visit www.oeko-tex.com to learn more about OEKO-TEX® Standard 100 testing.



Worldwide Responsible Accredited Production (WRAP)

WRAP is an independent body which gives certification to factories that meet criteria in relation to facilities, production and working practices for employees.

All of the Premier garments that are produced outside of the United Kingdom have been made in WRAP certified factories. The garments that are produced in the UK are made in factories that adhere to 'European Agency Health and Safety at Work' regulations. All garments that are produced in WRAP certified factories have the logo visible on the product page on the premier website.

Visit www.wrapcompliance.org to learn more about WRAP accreditation.

Read more about our ethical policy at www.premierworkwear.com

SIZE GUIDE

LADIES' Shirts / Polo's / Chef's Jackets/ Knitwear

Call size	XXS	XS	S	M	L	XL	2XL	3XL	4XL	5XL	6XL
Size	6	8	10	12	14	16	18	20	22	24	26
Collar cm	39	40	41	42	44	45	47	48	50	51	53
Bust to fit "	31	33	35	37	39	41	43	45	47	49	51
Bust to fit cm	79	84	89	94	99	104	109	114	119	124	129

LADIES TROUSERS

Call size	XXS	XS	S	M	L	XL	2XL	3XL	4XL	5XL
Size	6	8	10	12	14	16	18	20	22	24
Waist to fit "	22	24	26	28	30	32	34	36	38	40
Waist to fit cm	54	59	64	69	74	79	84	89	94	99

MEN'S Shirts / Polo's / Chef's Jackets/ Knitwear

Call size	XS	S	S/M	M	M/L	L	L/XL	XL	2XL	3XL	4XL	5XL	6XL	7XL
Collar "	14	14½	15	15½	16	16½	17	17½	18	18½	19	20	21	22
Collar cm	36	37	38	39	41	42	43	44	46	47	48	51	53	56
Chest to fit "	30	34	36	38	40	42	44	46	50	52	54	56	58	60
Chest to fit cm	77	87	92	96	102	107	111	117	126	132	138	142	147	152

MEN'S TROUSERS

Call size	S	M	L	XL	2XL	3XL	4XL	5XL
To fit waist"	30	32	34	36	38	40	42	44
To fit waist cm	76	80	86	92	96	100	106	110

CHEF'S TROUSERS

Call size	XS	S	M	L	XL	2XL	3XL	4XL	5XL
To fit waist"	24-26	27-29	30-32	33-35	36-3	39-40	41-42	43-44	45-46
To fit waist cm	61-66	68-73	76-81	84-89	91-96	99-101	104-106	109-111	114-116



**CLASSIC
FIT**



**SEMI
FITTED**



**FITTED
STYLE**



Our clothes are labelled with a whole host of wash care instructions and symbols, but do you really know what they all mean?

FOLLOW PREMIER'S SIMPLE GUIDE TO ACHIEVING THE PERFECT PILE OF LAUNDRY!

WASHING



The wash bowl with a number in denotes the maximum temperature that you should wash the garment to, in either a domestic or industrial washing machine.



Hand wash only



Do not bleach



Suitable for dry cleaning



Do not dry clean

DRYING



Do not wring



Hang to dry



Dry flat



Drip dry



Do not tumble dry



Suitable for tumble drying



Tumble dry on low heat



Tumble dry on medium heat



Tumble dry on high heat

IRONING



Do not iron



Iron on low heat



Iron on medium heat



Iron on high heat



Do not steam iron

HOSPITALITYWEAR

APRONS

PR101	BIB APRON	24
PR102	COTTON BIB APRON	23
PR104	BIB APRON WITH POCKET	24
PR105	ZIP POCKET WAIST APRON	24
PR106	LONG BAR APRON WITH POCKET	26
PR107	SHORT BAR APRON	27
PR108	LONG BAR APRON	26
PR109	THREE OPEN POCKET BAR APRON	27
PR112	FAIRTRADE BIB APRON	20
PR114	FAIRTRADE WAIST APRON	20
PR124	DELUXE BIB APRON	25
PR125	JEANS STITCH DENIM WAIST APRON	8
PR126	JEANS STITCH DENIM BIB APRON	8
PR149	CHILDREN'S BIB APRON	14
PR150	'COLOURS' BIB APRON	7
PR151	'COLOURS' HALF WAIST APRON	10
PR154	'COLOURS' BIB APRON WITH POCKET	10
PR155	'COLOURS' THREE POCKET APRON	12
PR156	BISTRO WAIST APRON WITH POCKET	19
PR158	'COLOURS' LONG BAR APRON	12
PR159	'COLOURS' 2 IN 1 APRON	15
PR162	CONTRAST BIB APRON	17
PR165	ESSENTIAL BIB APRON	18
PR167	100% POLYESTER APRON	16
PR169	BISTRO WAIST APRON	19

TABARDS

PR171	LADIES' POCKET TABARD	28
PR172	LADIES' LONG POCKET TABARD	28
PR176	CONTRAST TABARD	30
PR177	WRAP AROUND TUNIC APRON	31

SHIRTS & BLOUSES

PR200	MEN'S POPLIN LONG SLEEVE SHIRT	38
PR202	MEN'S POPLIN SHORT SLEEVE SHIRT	37
PR204	MEN'S FITTED POPLIN SHIRT	41
PR206	MEN'S ROLL SLEEVE BAR SHIRT	53
PR207	MEN'S SUPREME POPLIN LONG SLEEVE SHIRT	44
PR209	MEN'S SUPREME POPLIN SHORT SLEEVE SHIRT	43
PR214	MEN'S LONG SLEEVED FITTED FRIDAY SHIRT	46
PR217	MEN'S POPLIN CROSS-DYE ROLL SLEEVE SHIRT	51
PR220	MEN'S MICROCHECK GINGHAM LONG SLEEVE SHIRT	34
PR222	MEN'S JEANS STITCH DENIM SHIRT	48
PR300	LADIES' POPLIN LONG SLEEVE BLOUSE	38
PR302	LADIES' POPLIN SHORT SLEEVE BLOUSE	37
PR305	LADIES' POPLIN THREE QUARTER SLEEVE	40
PR306	LADIES' ROLL SLEEVE BAR SHIRT	53
PR307	LADIES' SUPREME POPLIN LONG SLEEVE BLOUSE	44
PR309	LADIES' SUPREME POPLIN SHORT SLEEVE BLOUSE	43
PR314	LADIES' LONG SLEEVED FITTED FRIDAY SHIRT	46
PR317	LADIES' POPLIN CROSS-DYE ROLL SLEEVE SHIRT	51
PR320	LADIES' MICROCHECK GINGHAM LONG SLEEVE SHIRT	34
PR321	LADIES' MICROCHECK GINGHAM SHORT SLEEVE SHIRT	34
PR322	LADIES' JEANS STITCH DENIM SHIRT	48

WAISTCOATS

PR620	MEN'S HOSPITALITY WAISTCOAT	54
PR621	LADIES' HOSPITALITY WAISTCOAT	54
PR622	MEN'S LINED WAISTCOAT	54
PR623	LADIES' LINED WAISTCOAT	54

TIES & SCARVES

PR705	BOW TIE	58
PR740	'COLOURS' CHIFFON SCARF	56
PR750	'COLOURS' SATIN TIE	57
PR755	'COLOURS' SATIN CLIP ON TIE	57
PR785	'COLOURS' CLIP ON FASHION TIE	58
PR789	SLIM KNITTED TIE	59
PR793	SLIM TIE	58

INDEX

POLO SHIRTS

PR610	MEN'S STUDDED POLO	66
PR612	COOLCHECKER STUDDED POLO	65
PR615	COOLCHECKER MEN'S PIQUE POLO	60
PR616	COOLCHECKER LADIES' PIQUE POLO	60
PR617	LONG SLEEVE COOLCHECKER PIQUE POLO	64
PR618	MEN'S CONTRAST TIPPED COOLCHECKER POLO	63
PR619	LADIES' CONTRAST TIPPED COOLCHECKER POLO	63

TROUSERS

PR520	MEN'S BUSINESS TROUSER	68
PR523	MEN'S HOSPITALITY TROUSER	67
PR526	MEN'S TAILORED TROUSER	68
PR528	MEN'S SUM FIT TROUSER	69
PR530	LADIES' BUSINESS TROUSERS	69
PR532	LADIES' HOSPITALITY TROUSER	67
PR536	LADIES' IRIS' STRAIGHT LEG TROUSER	68
PR538	LADIES' TAPERED LEG TROUSER	69

CHEFSWEAR

CHEF'S JACKETS

PR601	CHEF'S WORK COAT	80
PR659	CHEF'S COOLMAX LONG SLEEVE JACKET	80
PR661	'CUISINE' CHEF'S JACKET	81
PR664	STUDDED FRONT SHORT SLEEVE CHEF'S JACKET	72
PR665	STUDDED FRONT LONG SLEEVE CHEF'S JACKET	72
PR668	CHEF'S SHORT SLEEVE 'CUISINARY' PULL ON TUNIC	78
PR669	CHEF'S LONG SLEEVE 'CUISINARY' PULL ON TUNIC	78
PR670	LADIES' SHORT SLEEVE CHEF'S JACKET	74
PR671	LADIES' LONG SLEEVE CHEF'S JACKET	74

CHEF'S T-SHIRT & POLOS

PR649	COOLCHECKER CHEF'S T-SHIRT	83
PR610	STUD POLO	84
PR612	COOLCHECKER STUDDED POLO	84
PR615	COOLCHECKER MEN'S PIQUE POLO	85
PR616	COOLCHECKER LADIES' PIQUE POLO	85

CHEF'S TROUSERS

PR552	PULL ON CHEF'S TROUSER	87
PR553	ESSENTIAL CHEF'S TROUSER	87
PR554	CHEF'S SELECT TROUSER	87

CHEF'S ACCESSORIES

PR648	TURN-UP CHEF'S HAT	89
PR652	'CUISINE' CHEF'S JACKET STUDS	89
PR653	CHEF'S SKULL CAP	88
PR654	CHEF'S SCARF	88
PR658	CHEF'S ZANDANA	88

CHEF'S APRONS

PR102	COTTON BIB APRON	92
PR110	STRIPED BIB APRON	93
PR125	JEANS STITCH DENIM WAIST APRON	94
PR126	JEANS STITCH DENIM BIB APRON	94
PR150	'COLOURS' BIB APRON	90
PR164	GASTRONOMY WAIST APRON	94
PR168	CLASSIC HALF STRIPE APRON	93



®

UNIFORMS THAT WORK FOR YOU

HOSPITALITYWEAR

COLLECTION 2017

- APRONS
- SHIRTS & BLOUSES
- POLOS
- WAISTCOATS
- CHEFSWEAR

