



PREMIER®

UNIFORMS THAT WORK FOR YOU



Corporate

W A R D R O B E

TEARING UP

THE RULES ON 9 TO 5 STYLE



CORPORATE

WEAR

HAS NEVER LOOKED SO

GOOD

SHIRTS & BLOUSES	4 - 18
POLO SHIRTS	19 - 21
TROUSERS	22 - 23
KNITWEAR	24 - 26
TIES & SCARVES	28 - 39
SECURITY	40 - 43
SEASONAL LOOK BOOKS	44 - 47
SIZE GUIDE	48
ETHICAL POLICY	49
INDEX	50

30

ELECTRIFYING
COLOURS

Spark your imagination with a cascade of colour choices.

1 Men's short sleeve
Poplin shirt

CODE: PR202

Stiffened formal cut collar, left breast open pocket. Pearlised buttons on light blue and white, self colour on remaining. Complements ladies' PR302 style. Easycare fabric, minimal iron, domestic wash at 40°C.

Fabric
65%/35% Polyester/cotton plain poplin weave, 105gsm.

Sizes
Collar 14½ to 22" UK
Collar 37 to 56 cm
(Size 20, 21, 22" UK, 51, 53, 56 cm, only available in black and white)

Colours
30 as listed

2 Ladies' short sleeve
Poplin blouse

CODE: PR302

Soft collar styling with a rounded bottom hem, fitted styling. Pearlised buttons on light blue and white, self colour on remaining. Complements men's PR202 style. Easycare fabric, minimal iron, domestic wash at 40°C.

Fabric
65%/35% Polyester/cotton plain poplin weave, 105gsm.

Sizes
6 to 26 UK
2XS to 6XL

Colours
30 as listed



2

1

SAPPHIRE

TURQUOISE

ROYAL

LIGHT BLUE

MID BLUE

NAVY

LILAC

PURPLE

RICH VIOLET

AUBERGINE

HOT PINK

PINK

BURGUNDY

RED

STRAWBERRY RED

ORANGE

SUNFLOWER

WHITE

LIME

BOTTLE

EMERALD

AQUA

NATURAL

KHAKI

MOCHA

BROWN

BLACK

STEEL

DARK GREY

SILVER

5

30

COLOURS



WHAT'S YOUR

COLOUR STORY?

CHOOSE FROM **30** SHADES



Sapphire Turquoise Royal Light blue Mid blue



Navy Lilac Purple Rich violet Aubergine



Strawberry red Red Burgundy Hot pink Pink



Orange Sunflower White Bottle Lime



Emerald Aqua Natural Khaki Mocha



Brown Black Steel Dark grey Silver

1 Men's long sleeve Poplin shirt

CODE: PR200

Stiffened formal cut collar, left breast open pocket. Pearlescent buttons on light blue and white, self colour on remaining. Complements ladies' PR300 style. Easycare fabric, minimal iron, domestic wash at 40°C.

Fabric
65%/35% Polyester/cotton plain poplin weave, 105gsm.

Sizes
Collar 14 1/2 to 22" UK
Collar 37 to 56 cm

(Size 20, 21, 22" UK, 51, 53, 56 cm, only available in black and white)

Colours
30 as listed

2 Ladies' long sleeve Poplin blouse

CODE: PR300

Soft collar styling with a rounded bottom hem, fitted styling. Pearlescent buttons on light blue and white, self colour on remaining. Complements men's PR200 style. Easycare fabric, minimal iron, domestic wash at 40°C.

Fabric
65%/35% Polyester/cotton plain poplin weave, 105gsm.

Sizes
6 to 26 UK
2XS to 6XL

Colours
30 as listed

THE SUPREME P O P L I N

SHORT SLEEVE

1 Supreme Poplin men's short sleeve shirt

CODE: PR209

Supreme heavier weight short sleeve Poplin shirt with improved wear and appearance. Semi fitted styling with a stiffened formal cut collar and two button fastening. Complements ladies' PR309 style, domestic wash at 40°C.

Fabric
65%/35% Polyester/ Cotton, plain poplin weave, 125gsm.

Sizes
Collar 14½ to 19" UK
Collar 37 to 46 cm
S to 2XL

Colours
as listed

2 Supreme Poplin ladies' short sleeve blouse

CODE: PR309

Ladies' easy care short sleeve blouse with improved wear and appearance. A fitted style with bust and back darts and soft collar styling. Complements men's PR209 style, domestic wash at 40°C.

Fabric
65%/35% Polyester/ Cotton, plain poplin weave, 125gsm.

Sizes
8 to 26
XS to 6XL

Colours
as listed







2

1

THE
SUPREME

P O P L I N
LONG SLEEVE



1 Supreme Poplin men's long sleeve shirt

CODE: PR207

Supreme heavier weight long sleeve Poplin shirt with improved wear and appearance. Semi fitted styling with a stiffened formal cut collar and button fastened cuffs that can fit cufflinks. Complements ladies' PR307 style, domestic wash at 40°C.

Fabric
65%/35% Polyester/ Cotton, plain poplin weave, 125gsm.

Sizes
Collar 14 1/2 to 19" UK
Collar 37 to 46 cm
S - 2XL

Colours
as listed



2 Supreme Poplin ladies' long sleeve blouse

CODE: PR307

Ladies' easy care long sleeve blouse with improved wear and appearance. A fitted style with bust and back darts and soft collar styling. Complements men's PR207 style, domestic wash at 40°C.

Fabric
65%/35% Polyester/ Cotton, plain poplin weave, 125gsm.

Sizes
8 to 26
XS to 6XL

Colours
as listed

JOIN THE
LOVE AFFAIR

WITH THE

Signature
OXFORD

SHIRT COLLECTION







40°
WASH

Signature

OXFORD

SHIRT COLLECTION

1 Signature Oxford
men's short sleeve shirt
CODE: PR236

Men's Signature Oxford short sleeve easy care shirt with a wrinkle free finish. Button down collar and left breast open mitred pocket. Complements ladies' PR336 style, domestic wash at 40°C.

Fabric
70%/30% Cotton/ Polyester, Cotton rich Oxford weave, 135gsm.

Sizes
Collar 14½ to 19" UK
Collar 37 to 46 cm
S to 2XL

Colours
as listed

2 Signature Oxford
ladies' short
sleeve blouse
CODE: PR336

Ladies' Signature Oxford short sleeve easy care blouse with a wrinkle free finish. Soft collar styling and rounded bottom hem. Complements men's PR236 style, domestic wash at 40°C.

Fabric
70%/30% Cotton/ Polyester, Cotton rich Oxford weave, 135gsm.

Sizes
8 to 26 UK
XS to 6XL

Colours
as listed



1 Signature Oxford men's long sleeve shirt

CODE: PR234

Men's Signature Oxford long sleeve easy care shirt with a wrinkle free finish. Button down collar and left breast open mitred pocket. Button fastened cuffs that will fit cufflinks. Complements ladies' PR334 style, domestic wash at 40°C.

Fabric
70%/30% Cotton/ Polyester, Cotton rich Oxford weave, 135gsm.

Sizes
Collar 14½ to 19" UK
Collar 37 to 46 cm
S to 2XL

Colours



BLACK



WHITE



LIGHT BLUE



SILVER

2 Signature Oxford ladies' long sleeve blouse

CODE: PR334

Ladies Signature Oxford long sleeve easy care blouse with a wrinkle free finish. Soft collar styling and rounded bottom hem. Double buttons on the cuff. Complements men's PR234 style, domestic wash at 40°C.

Fabric
70%/30% Cotton/ Polyester, Cotton rich Oxford weave, 135gsm.

Sizes
8 to 26 UK
XS to 6XL

Colours



BLACK



WHITE



LIGHT BLUE



SILVER



A full-page photograph of a man with short brown hair, wearing a light blue long-sleeved dress shirt and a dark blue tie. He is standing in an office environment with a white wall featuring circular patterns. In the background, there is a desk with a lamp and a stack of blue folders. The man has his left hand in his pocket and is looking towards the camera.

Signature
OXFORD

SHIRT COLLECTION

STYLISH

RED HOT ALTERNATIVES

1 Three quarter sleeve Poplin blouse

CODE: PR305

Soft collar styling with a rounded bottom hem, fitted styling with bust and back darts. Pearlised buttons on light blue and white, self colour on remaining. Complements men's PR200 style. Easycare fabric, minimal iron, domestic wash at 40°C.

Fabric

65%/35% Polyester/cotton plain poplin weave, 105gsm.

Sizes

6 to 26 UK
2XS to 6XL

(Size 6 UK, 34 EU, only available in black and white)

Colours



BLACK



MID BLUE



LIGHT BLUE



RED



ROYAL



SILVER



LILAC



WHITE

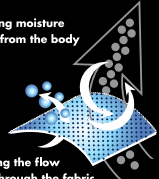


9

COLOURS

COOL
CHECKER™

Drawing moisture
away from the body



Allowing the flow
of air through the fabric,
fast dry and crease resistant.

Polo shirts

2 Coolchecker stud polo CODE: PR612

Stud polo in easycare fabric with moisture management and excellent colour retention. Unisex styling with extra body length, self fabric collar and two pop stud placket - rust free. Domestic wash 60°C, quick drying.

Fabric
100% Polyester, bird's eye
pique knit, 140gsm

Sizes
XS to 3XL

Colours as listed



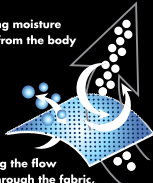


16

COLOURS

- ◆ SHAPED TO FIT
- ◆ FAST DRY
- ◆ BUTTON POLO
- ◆ MOISTURE MANAGEMENT
- ◆ CREASE RESISTANT
- ◆ HIS & HERS SIZES

Drawing moisture away from the body



Allowing the flow of air through the fabric, fast dry and crease resistant.



Red Strawberry red Burgundy Brown



Hot pink Purple Navy Royal



Black White Silver Dark grey



Bottle Lime Turquoise Sapphire

FITTED STYLE

COOL CHECKER

1 Men's Coolchecker pique polo

CODE: PR615

Men's button polo with panelled detail for a more fitted shape. A stylish knit collar and three button placket to the neckline make for a modern piece of workwear which acts as a smart alternative to a shirt. Easycare fabric with moisture management and excellent colour retention. Domestic wash 40°C, quick drying.

Fabric
100% Polyester pique knit, 155gsm

Sizes
S to 3XL

2 Ladies' Coolchecker pique polo

CODE: PR616

Ladies' button polo with panelled detail for a more fitted shape. A stylish knit collar and three button placket to the neckline make for a modern piece of workwear which acts as a smart alternative to a shirt. Easycare fabric with moisture management and excellent colour retention. Domestic wash 40°C, quick drying.

Fabric
100% Polyester pique knit, 155gsm

Sizes
XS to 2XL



1 Ladies' 'Iris' straight leg trouser

CODE: PR536

Easycare trousers, machine washable at 40°C. Straight leg style with deep waistband, zip fly with two button cross over fastening at waist. Great all round uniform trousers.

Fabric
100% Polyester plain weave with 'inherent stretch capabilities', 185gsm.

Sizes
8 to 24, XS to 5XL
Regular leg 31"/ 79 cm,
Long leg 34"/ 86 cm

Colours



BLACK

2 Men's business trouser

CODE: PR520

Easycare trousers, machine washable at 40°C. YKK front zip fly with button and hook 'n' bar at waist. Rear jettled pocket and two swing hip pockets.

Fabric
100% Polyester plain weave with 'inherent stretch capabilities', 185gsm.

Sizes
Waist 30 to 44" ins
Waist 76 to 110 cms
Regular leg 31"/ 79 cm
Long leg 34"/ 86 cm

Colours



BLACK



DARK NAVY

3 Ladies' business trouser

CODE: PR530

Easycare trousers, machine washable at 40°C. YKK front zip fly with concealed hook and button fastening at waist. Straight leg and no pockets for a flattering fit.

Fabric
100% Polyester plain weave with 'inherent stretch capabilities', 185gsm.

Sizes
8 to 24, XS to 5XL
Regular leg 31"/ 79 cm
Long leg 34"/ 86 cm

Colours



BLACK



DARK NAVY



TROUSERS

THAT GO TO GREAT LENGTHS

4 Ladies' hospitality trouser

CODE: PR532

Easycare trousers, machine washable at 40°C. Boot cut style with flat front and D ring attached to waistband. Zip fly with button and hook 'n' bar at waist.

Fabric
100% Polyester semi dull finish, 215gsm.

Sizes
8 to 24, XS to 5XL
Regular leg 31" / 79 cm
Long leg 34" / 86 cm

Colours



BLACK

5 Men's hospitality trouser

CODE: PR523

Easycare trousers, machine washable at 40°C. Flat front with belt loops, handy D ring attached to waistband. Zip fly with button and hook 'n' bar at waist, rear jetted pocket and two swing hip pockets.

Fabric
100% Polyester semi dull finish, 215gsm.

Sizes
Waist 30 to 42" ins
Waist 76 to 106 cm
Regular leg 31" / 79 cm
Long leg 34" / 86 cm

Colours



BLACK

A NEW SPIN ON

KNITWEAR

THE V NECK COTTON RICH SWEATER



1 Men's V neck knitted sweater

CODE: PR694

V-neck long sleeve men's sweater, made with a soft and comfortable fine gauge knitted cotton rich yarn. Contemporary styling with set in sleeves, domestic wash at 40°C.

Fabric
55% Cotton 45% Acrylic 12 gauge knit.

Sizes
2XS to 4XL

Colours
as listed

2 Ladies' V neck knitted sweater

CODE: PR696

V-neck long sleeve ladies' sweater, made with a soft and comfortable fine gauge knitted cotton rich yarn. Contemporary styling with set in sleeves, domestic wash at 40°C.

Fabric
55% Cotton 45% Acrylic 12 gauge knit.

Sizes
8 to 24 UK
XS to 5XL

Colours
as listed



40°
WASH



SOFT

& STYLISH
CARDIGANS

1 Ladies' button through knitted cardigan CODE: PR697

Long sleeve V-neck cardigan with a seven button fastening, made with a soft and comfortable fine gauge knitted cotton rich yarn, domestic wash at 40°C.

Fabric
55% Cotton 45% Acrylic 12
gauge knit.

Sizes
8 to 24
XS to 5XL

Colours



BLACK



NAVY



40°
WASH

ACCESSORIES

TO TIE YOUR LOOK TOGETHER

WITH UP TO

40

COLOURS



+ A MULTITUDE OF PATTERNS

TIES

A CASCADE OF 40 SHADES

1 'Colours' satin full tie CODE: PR750

Lustrous satin tie, machine washable at 40° C.

Fabric
100% Woven polyester satin weave.

Size
One size
Length 57"/144cm,
Narrow Blade 3.34"/8.5cm

Colours
as listed

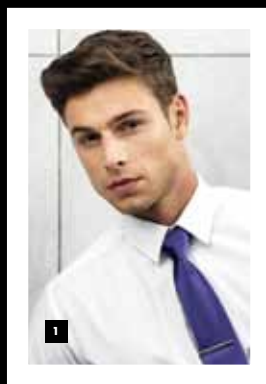
2 'Colours' satin clip tie CODE: PR755

Lustrous satin tie, machine washable at 40° C.

Fabric
100% Woven polyester satin weave.

Size
One size
Length 20"/50cm,
Narrow Blade 3.34"/8.5cm

Colours
as listed





40

COLOURS

40

COLOURS



SCARVES

ADD A SHOT OF PURE
SHEER COLOUR

1 Chiffon scarf

CODE: PR740

Lightweight and lustrous, this ultra-desirable accessory is versatile, comfortable to wear and comes in a choice of forty vivid colours so you can complement any corporate uniform beautifully. The scarves are designed to partner the PR750 range of satin ties, available in matching colours.

Fabric
100% Polyester, Chiffon weave 40gsm

Size
Width 6.5"/16.5cm,
Length 38.5"/98cm

Colours
as listed below



TIES

PLAIN OPTIONS

1 Slim tie CODE: PR793

Satin weave slim tie.

Fabric
100% Polyester

Size
Length 57"/144cm,
Blade 2"/5cm

Colours as listed



2 Silk tie CODE: PR795

Luxurious silk tie.

Fabric
100% Silk woven twill

Size
Length 57"/144cm,
Blade 4"/10cm

Colours as listed



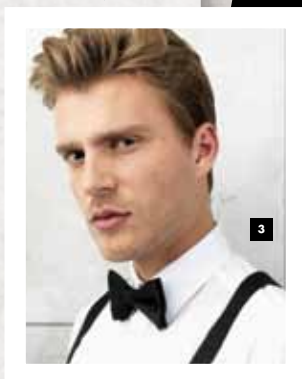
3 Bow tie CODE: PR705

Satin weave bow tie with
hook and bar fastening.

Fabric
100% Polyester satin
weave

Size
One size

Colours
Black



4 'Colours' fashion full tie CODE: PR765

Machine washable at 40°C.
PR785 clip version is also
available.

Fabric 100% Polyester

Size
Length 57"/144cm,
Blade 4"/10cm

Colours
24 as listed

5 'Colours' fashion clip tie CODE: PR785

Clip tie, machine washable at
40°C. PR765 non clip version
is also available.

Fabric 100% Polyester

Size
Length 18"/47cm,
Blade 4"/10cm

Colours
24 as listed

'Colours'

FASHION TIE





SCARVES

ADD A SHOT OF
SATIN COLOUR

■ 'Colours' Plain
business scarf

CODE: PR730

Suitable for screenprinting,
machine washable.

Fabric 100% Polyester

Size
Width 10"/25cm,

Length 47"/120cm

Colours
24 As listed below





24

COLOURS

1



Grey

Silver

Turquoise

Mid Blue

Royal

Navy

Black

White

Fuchsia

Lilac

Magenta

Purple

TIES & SCARVES

IN MATCHING PATTERNS



PATTERN TIES

Fabric: 100% Polyester.

Tie size:

Length 57" / 144cm,

Blade 4" / 10cm

PATTERN SCARVES

Fabric: 100% Polyester.

Scarf size:

Width 10" / 25cm,

Length 47" / 120cm



1 Multi stripe tie
CODE: PR760

3 Checks tie
CODE: PR725

5 Dice check tie
CODE: PR721

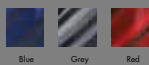
7 Stripes tie
CODE: PR724

2 Multi stripe scarf
CODE: PR770

4 Checks business scarf
CODE: PR735

6 Dice check business scarf
CODE: PR731

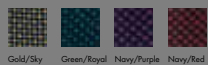
8 Striped business scarf
CODE: PR734



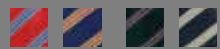
Blue Grey Red



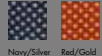
Red/Silver Sky/Gold



Gold/Sky Green/Royal Navy/Purple Navy/Red



Red/Sky Royal/Cream Bottle/Royal Navy/Cream



Navy/Silver Red/Gold

CONTINUES ON NEXT PAGE

TIES & SCARVES



PATTERN TIES

Fabric: 100% Polyester.

Tie size:

Length 57" / 144cm,

Blade 4" / 10cm

1 Four stripe tie
CODE: PR762

2 Four stripe scarf
CODE: PR772

3 Wide stripes tie
CODE: PR726

4 Wide striped scarf
CODE: PR736

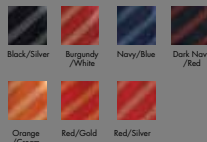
PATTERN SCARVES

Fabric: 100% Polyester.

Scarf size:

Width 10" / 25cm,

Length 47" / 120cm





5 Horizontal
stripe tie
CODE: PR722

6 Candy stripe tie
CODE: PR766

7 Woven
squares tie
CODE: PR769

8 Mini squares
tie
CODE: PR768

Pattern TIES

Fabric: 100% Polyester.

Tie size: Length 57"/ 144cm, Blade 4"/10cm

9 Bold stripe tie
CODE: PR763

10 Line check tie
CODE: PR720

11 Plain basket
weave tie
CODE: PR728

12 Zig zag tie
CODE: PR767



1

2

SECURITY

STAMP YOUR AUTHORITY

1 Ladies' pilot short sleeve poplin shirt

CODE: PR312

Stiffened collar, with tabs for epaulettes on shoulder. Two mitred pockets with button flaps, combined pen pocket on left breast pocket, domestic wash at 40°C.

Fabric
65%/35% Polyester/cotton plain poplin weave, 105gsm.

Sizes
8 to 26 UK
XS to 6XL

Colours



WHITE



BLACK

2 Men's pilot short sleeve poplin shirt

CODE: PR212

Stiffened collar, with tabs for epaulettes on shoulder. Two mitred pockets with button flaps, combined pen pocket on left breast pocket, domestic wash at 40°C.

Fabric
65%/35% Polyester/cotton plain poplin weave, 105gsm.

Sizes
Collar 14½ to 19" UK
Collar 37 to 48cm

Colours



LIGHT BLUE



WHITE



BLACK

3 Ladies clip cravat

CODE: PR711

Ideal for security and industrial safety applications. Complements the PR710 Clip tie and the PR715 epaulettes.

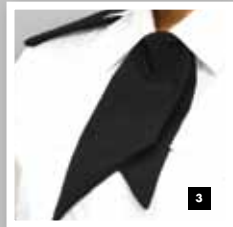
Fabric
100% Polyester weave.

Sizes
One size

Colours



BLACK



3

4 Epaulettes

CODE: PR715

Sold in pairs, embroiderable/printable area 9cm x 5cm. Velcro fastening, fabric to match PR700 & PR710 ties.

Fabric
100% Polyester weave.

Sizes
One size

Colours



BLACK



NAVY



4





SECURITY

1 Men's security trousers

CODE: PR523

Easycare trousers, machine washable at 40° C. Flat front with belt loops, handy D ring attached to waistband. Zip fly with button with hook 'n' bar at waist, rear jettied pocket and two swing hip pockets.

Fabric
100% Polyester semi dull finish,
215gsm.

Sizes
Waist 30 - 42" ins
Waist 76 - 106 cm
Regular leg 31" / 79 cm
Long leg 34" / 86 cm

Colours



2 Ladies' security trousers

CODE: PR532

Easycare trousers, machine washable at 40° C. Boot cut style with flat front and D ring attached to waistband. Zip fly with button and hook 'n' bar at waist.

Fabric
100% Polyester semi dull finish,
215gsm.

Sizes
8 to 24, XS to 5XL
Regular leg 31" / 79 cm
Long leg 34" / 86 cm

Colours



3 Plain work tie

CODE: PR700

Blade width 3 1/2" / 9 cm
Length 57" / 144 cm

Fabric
100% Polyester plain weave

Sizes
One size

Colours



LONG SLEEVE

4 Men's pilot long sleeve poplin shirt

CODE: PR210

Stiffened collar, with tabs for epaulettes on shoulder. Two mitred pockets with button flaps, combined pen pocket on left breast pocket, domestic wash at 40° C.

Fabric
65%/35% Polyester/cotton plain poplin weave, 105gsm.

Sizes
Collar 14½ to 19" UK
Collar 37 to 48cm

Colours



LIGHT BLUE



WHITE



BLACK



5

5 Clip on tie

CODE: PR710

Blade width 3½"/9 cm
Length 18"/47 cm

Fabric
100% Polyester plain weave

Sizes
One size

Colours



BLACK



BOTTLE



BURGUNDY



NAVY

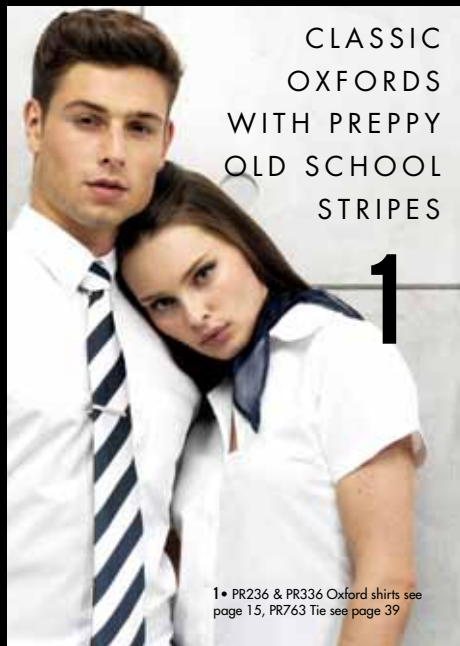


RED



ROYAL





CLASSIC
OXFORDS
WITH PREPPY
OLD SCHOOL
STRIPES

1

1 • PR236 & PR336 Oxford shirts see page 15, PR763 Tie see page 39



THE POPLIN MUST HAVE

2

2 • PR202 & PR302 Poplin shirts see page 4, PR750 matching Tie see page 28.

3 • PR200 & PR300 Poplin shirts see page 7, PR750 matching Tie see page 28.

SPRING

ICE COOL LOOKS IN
ICED PARFAIT SHADES



4

4 • PR200 & PR300 Poplin shirts see page 7, PR750 matching Ties on page 28, matching PR740 Chiffon scarves see page 31.



VIBRANT TONES OF EMERALD



3



A BOLT FROM THE BLUE
WITH SUMMER SKIES AND
SAPPHIRE SEAS



6
WORKING WEEK TO
AFTER HOURS CHIC

6 • Crisp Oxford blouse with the PR740
Chiffon scarf, see page 31

SUMMER



5

30

SHADES OF
SHIRTS & BLOUSES

40

SHADES OF
TIES & SCARVES

16

SHADES OF POLOS

5 • PR615 & PR616 Coolchecker
button polos see page 21.



ALWAYS IN THE PINK

30

POPLIN
COLOURS

1 • PR207 & PR307 Supreme poplin shirts see page 11, PR750 Ties see page 28.

2 • PR750 Full color range of Ties on page 28, matching PR740 Chiffon scarves see page 31.



1

BLACK & WHITE
QUALITY BASICS

AUTUMN



2

TURN UP THE HEAT
WITH COLOUR



3



WINTER

RICH BERRY AND
MULLED WINE SHADES
TO SPICE UP
YOUR STYLE



3 • PR697 Knitted cardigan see page 26, featured with PR305 Three quarter sleeve red blouse see page 18.

4 • PR615 & PR616 Coolchecker button polos see page 21.

5 • PR200 & PR300 Poplin shirts see page 7, PR750 matching Tie see page 28.



SIZE GUIDE

MEN'S POPLIN Shirt

PR202, PR200

Collar size (in)	14½	15	15½	16	16½	17	17½	18	18½	19	20	21	22
Call size	S	S/M	M	M/L	L	L/XL	XL	XL/2XL	2XL	2XL/3XL	3XL	3XL/4XL	4XL
Collar size (cm)	37	38	39/40	41	42	43	44/45	46	47	48	51	53	56
Chest actual (in)	43	45	47	49	51	53	55	57	59	61	63	65	67
Chest actual (cm)	109	114	119	124	129	134	139	144	149	154	159	164	169

MEN'S SUPREME POPLIN Shirt

PR207, PR209

Collar size (in)	14½	15	15½	16	16½	17	17½	18	18½	19
Call size	S	S/M	M	M/L	L	L/XL	XL	XL/2XL	2XL	2XL/3XL
Collar size (cm)	37	38	39½	41	42	43	44½	46	47	48
Chest actual (in)	41	43	45	47	49	51	53	55	57	59
Chest actual (cm)	104	109	114	119	124	129	134	139	144	149

LADIES' POPLIN blouse

PR302, PR300

Call size	6	8	10	12	14	16	18	20	22	24	26
	2XS	XS	S	M	L	XL	2XL	3XL	4XL	5XL	6XL
EU	34	36	38	40	42	44	46	48	50	52	54
Bust actual (in)	35½	37½	39½	41½	43½	45½	47½	49½	51½	53½	55½
Bust actual (cm)	90	96	101	106	111	116	121	126	131	136	141

LADIES' SUPREME POPLIN blouse

PR307, PR309

Call size	6	8	10	12	14	16	18	20	22	24	26
	2XS	XS	S	M	L	XL	2XL	3XL	4XL	5XL	6XL
EU	34	36	38	40	42	44	46	48	50	52	54
Bust actual (in)	35½	37½	39½	41½	43½	45½	47½	49½	51½	53½	55½
Bust actual (cm)	90	96	101	106	111	116	121	126	131	136	141

MEN'S SIGNATURE OXFORD Shirt

PR234, PR236

Collar size (in)	14½	15	15½	16	16½	17	17½	18	18½	19
Call size	S	S/M	M	M/L	L	L/XL	XL	XL/2XL	2XL	2XL/3XL
Collar size (cm)	37	38	39½	41	42	43	44½	46	47	48
Chest actual (in)	41	43	45	47	49	51	53	55	57	59
Chest actual (cm)	104	109	114	119	124	129	134	139	144	149

LADIES' SIGNATURE OXFORD blouse

PR334, PR336

Call size	8	10	12	14	16	18	20	22	24	26
	XS	S	M	L	XL	2XL	3XL	4XL	5XL	6XL
EU	36	38	40	42	44	46	48	50	52	54
Bust actual (in)	37½	39½	41½	43½	45½	47½	49½	51½	53½	55½
Bust actual (cm)	96	101	106	111	116	121	126	131	136	141

MEN'S V NECK Knitted sweater

PR694

Call size	2XS	XS	S	M	L	XL	2XL	3XL	4XL
EU	34	36	38	40	42	44	46	48	50
Chest actual (in)	34	37	39	42	44	46	48	51	53
Chest actual (cm)	88	94	100	106	112	118	124	130	136
To fit chest (cm)	85	90	95	100	105	110	115	120	125

LADIES' V NECK Knitted sweater/cardigan

PR696, PR697

Call size	8	10	12	14	16	18	20	22	24
	XS	S	M	L	XL	2XL	3XL	4XL	5XL
EU	36	38	40	42	44	46	48	50	52
Bust actual (in)	36	37	39	41	42	44	46	48	50
Bust actual (cm)	92	96	100	104	108	113	118	123	128
To fit chest (cm)	80	84	88	92	96	100	104	108	112

LADIES' flat front trousers

PR532, PR530, PR536

Call size	8	10	12	14	16	18	20	22	24
EU	36	38	40	42	44	46	48	50	52
To fit waist (in)	23	25	27	29	31	33	35	37	39
To fit waist (cm)	59	64	69	74	79	84	89	94	99

(Regular leg 31 inches, long leg 34 inches.)

POLO shirts

PR615 Men's coolchecker

Call size	S	M	L	XL	2XL	3XL
Chest actual (in)	38.5	41	43	45.5	48	50
Chest actual (cm)	98	104	110	116	122	128
To fit chest (in)	34	38	42	46	50	54

PR616 Ladies' coolchecker

Call size	XS	S	M	L	XL	2XL
Chest actual (in)	34	37	39	42	45	48
Chest actual (cm)	88	94	100	106	114	122
To fit chest (in)	76	81	86	91	97	102

PR612 coolchecker (Unisex)

Call size	XS	S	M	L	XL	2XL	3XL
Chest actual (in)	32	36	40	44	48	52	56
Chest actual (cm)	81	91	101	111	121	131	141
To fit chest (in)	30	34	38	42	46	50	54

MEN'S trousers

PR520

To fit waist (in)	30	32	34	36	38	40	42	44
To fit waist (cm)	76	80	86	92	96	100	106	110

(Regular leg 31 inches, long leg 34 inches.)

PR523

Call size	30	32	34	36	38	40	42
EU	40	42	44	46	48	50	52
To fit waist (in)	30	32	34	36	38	40	42
To fit waist (cm)	76	80	86	92	96	100	106

(Regular leg 31 inches, long leg 34 inches.)

ETHICAL

At Premier we aim to achieve the highest ethical and environmental standards and we only like to work with manufacturers that do the same. To make sure our credentials are impeccable we have a detailed code of conduct that's integral to the way we do business and all our suppliers and their sources must sign up to it. It's based on the very best employment ethics, health and safety practices and environmental considerations. So when you purchase any of our goods you can be sure that they have been produced lawfully, through fair and honest dealing, in decent working conditions and without exploiting the people who made them. Any environmental impact during production and transportation has also been kept to a minimum.

Premier also has the right to run audits and spot checks, personally or via external parties, on our suppliers' premises without their prior knowledge to verify that they are behaving in an appropriate manner and upholding our values. Just one more way that you can trust us to make a difference to people and the planet.

All our factories are WRAP or BCIS approved.



INDEX

BUSINESS

SHIRTS & BLOUSES

PR302	LADIES' POPLIN SHORT SLEEVE BLOUSE	4
PR202	MEN'S POPLIN SHORT SLEEVE SHIRT	4
PR300	LADIES' POPLIN LONG SLEEVE BLOUSE	6
PR200	MEN'S POPLIN LONG SLEEVE SHIRT	6
PR209	MEN'S SUPREME POPLIN SHORT SLEEVE SHIRT	8
PR309	LADIES' SUPREME POPLIN SHORT SLEEVE BLOUSE	8
PR207	MEN'S SUPREME POPLIN LONG SLEEVE SHIRT	10
PR307	LADIES' SUPREME POPLIN LONG SLEEVE BLOUSE	10
PR336	LADIES' SIGNATURE OXFORD SHORT SLEEVE BLOUSE	14
PR236	MEN'S SIGNATURE OXFORD SHORT SLEEVE SHIRT	14
PR234	MEN'S SIGNATURE OXFORD LONG SLEEVE SHIRT	16
PR334	LADIES' SIGNATURE OXFORD SHORT SLEEVE BLOUSE	16
PR305	LADIES' POPLIN THREE QUARTER SLEEVE	18

POLO

PR612	COOLCHECKER STUD POLO	19
PR615	COOLCHECKER MEN'S BUTTON POLO	20
PR616	COOLCHECKER LADIES' BUTTON POLO	20

TROUSERS

PR520	MEN'S BUSINESS POLYESTER TROUSER	22
PR523	MEN'S OFFICE TROUSER	23
PR530	LADIES' BUSINESS TROUSERS	22
PR532	LADIES' OFFICE TROUSER	23
PR536	LADIES' 'IRIS' STRAIGHT LEG TROUSER	22

KNITWEAR

PR696	LADIES' V NECK SWEATER	24
PR694	MEN'S V NECK SWEATER	24
PR697	LADIES' V NECK CARDIGAN	26

TIES

PR750	'COLOURS' SATIN TIE	28
PR755	'COLOURS' SATIN CLIP TIE	28
PR793	SLIM TIE	32
PR795	'COLOURS' SILK TIE	32
PR705	SATIN BOW TIE	32
PR765	'COLOURS' FASHION TIE	32
PR785	'COLOURS' FASHION CLIP TIE	32
PR760	MULTI-STRIFE TIE	37
PR725	CHECKS TIE	37
PR721	DICE CHECK TIE	37
PR724	STRIPES TIE	37
PR762	FOUR STRIFE TIE	38
PR726	WIDE STRIPES TIE	38
PR722	HORIZONTAL STRIFE TIE	39
PR766	CANDY STRIFE TIE	39
PR769	WOVEN SQUARES TIE	39
PR768	MINI SQUARES TIE	39
PR763	BOLD STRIFE TIE	39
PR720	LINE CHECK TIE	39
PR728	PLAIN BASKET WEAVE TIE	39
PR767	ZIG ZAG TIE	39

SCARVES

PR740	PLAIN CHIFFON SCARF	31
PR730	PLAIN BUSINESS SCARF	34
PR770	MULTI STRIFE SCARF	37
PR735	CHECKS BUSINESS SCARF	37
PR731	DICE CHECK BUSINESS SCARF	37
PR734	STRIPED BUSINESS SCARF	37
PR772	FOUR STRIFE SCARF	38
PR736	WIDE STRIPED SCARF	38

SECURITY

PR212	MENS PILOT SHORT SLEEVE SHIRT	41
PR312	LADIES PILOT SHORT SLEEVE SHIRT	41
PR711	CLIP CRAWAT	41
PR715	EPAULETTES	41
PR523	MENS SECURITY TROUSERS	42
PR532	LADIES SECURITY TROUSERS	42
PR700	PLAIN WORK TIE	42
PR710	CLIP ON TIE	43
PR210	MENS PILOT LONG SLEEVE SHIRT	43





®

PREMIER

UNIFORMS THAT WORK FOR YOU

CORPORATE

CLOTHING

30 COLOURS

HIS & HERS STYLES

SHIRTS & BLOUSES

WIDE RANGE OF SIZES

TIES & SCARVES

TROUSERS

